

---

Review

# Cardiac $\beta$ -Adrenoceptor Signaling: The New Insight on An Old Target in the Therapy of Cardiovascular Disease

Ying Song<sup>1</sup>, Anthony Yiu-Ho Woo<sup>2,\*</sup>, Yan Zhang<sup>3,4,\*</sup>, and Ruiping Xiao<sup>5,6,7,8</sup>

<sup>1</sup> Center of Basic Medical Research, Institute of Medical Innovation and Research, Peking University Third Hospital, Beijing, 100191, China.

<sup>2</sup> School of Life Sciences and Biopharmaceutics, Shenyang Pharmaceutical University, Shenyang, 110016, China.

<sup>3</sup> Institute of Cardiovascular Sciences and Key Laboratory of Molecular Cardiovascular Sciences, School of Basic Medical Sciences, Ministry of Education, Peking University Health Science Center, Beijing, 100191, China.

<sup>4</sup> Beijing Key Laboratory of Cardiovascular Receptors Research, Peking University, Beijing, 100191, China.

<sup>5</sup> State Key Laboratory of Membrane Biology, Institute of Molecular Medicine, College of Future Technology, Peking University, Beijing, 100871, China.

<sup>6</sup> Peking-Tsinghua Center for Life Sciences, Peking University, Beijing, China.

<sup>7</sup> Beijing City Key Laboratory of Cardiometabolic Molecular Medicine, Peking University, Beijing, 100871, China

<sup>8</sup> PKU-Nanjing Joint Institute of Translational Medicine, Nanjing, 210000, China.

\* Correspondence: yuihowoo@syphu.edu.cn (Anthony Yiu-Ho Woo), Tel.: +86-24-23986375; zhangyan9876@pku.edu.cn (Yan Zhang), Tel.: +86-10-82805945.

Received: 19 October 2022

Accepted: 28 November 2022

Published: 21 December 2022

**Abstract:** A variety of G protein-coupled receptors (GPCRs) are involved in the regulation of cardiovascular function. The  $\beta$ -adrenoceptors ( $\beta$ -ARs) are the dominant receptor species in the heart, in which the  $\beta_1$ -AR and the  $\beta_2$ -AR are considered functional. Stimulation of the  $\beta$ -ARs produces myocardial inotropy via activation of the  $G_s$ -cAMP-PKA signaling cascade. Prolonged stimulation of the  $\beta_1$ -AR is cardiac harmful because the stimulated  $\beta_1$ -AR couples only to  $G_s$  proteins and it mediates a cardiotoxic signal. On the other hand, the  $\beta_2$ -AR couples dually to both  $G_s$  and  $G_i$  proteins and the  $\beta_2$ -AR- $G_i$  pathway is antiapoptotic. The activated  $G_i$  signal also counteracts the  $\beta$ -AR- $G_s$ -promoted positive inotropic effect. Other key players in cardiac  $\beta$ -AR signaling include  $Ca^{2+}$ /calmodulin-dependent protein kinases (CaMKs), GPCR kinases (GRKs),  $\beta$ -arrestins and phosphodiesterases. During heart failure, excessive sympathetic stimulation results in the activation of the cardiotoxic  $\beta_1$ -AR-CaMKII $\delta$  pathway and the upregulation of GRK2 and  $G_i$  in the heart. GRK2 promotes the desensitization of  $\beta$ -ARs and enhances a  $\beta_2$ -AR-mediated  $G_i$  signaling. These signal transduction processes accompanying the downregulation of the  $\beta_1$ -AR are involved in cardiac dysfunction, maladaptive cardiac remodeling, and the progression of chronic heart failure.  $\beta$ -blockers are widely used in the treatment of cardiovascular disease. They have established their position as one of the “four pillars of heart failure” more than twenty years ago. In the present review, we provide an overview of the recent progress in the basic research of GPCRs focusing on cardiac  $\beta$ -AR signal transduction.

**Keywords:** heart; receptors, adrenergic, beta; signal transduction; heart failure.

---

## 1. GPCRs and Cardiovascular Disease

### 1.1. Brief Introduction of GPCRs

G protein-coupled receptors (GPCRs), or seven-fold transmembrane receptors, are the largest class of membrane proteins in the human genome. GPCRs share a common structure consisting of peptides with an extracellular N-terminus, an intracellular C-terminus (CT), and seven hydrophobic transmembrane helices linked by three extracellular and three intracellular loops (ICLs). The extracellular part of the receptor is

usually glycosylated, and the highly conserved cysteine residues in the extracellular loops can form disulfide bonds to stabilize the spatial structure of the receptor. The CT and the ICLs are binding sites for G proteins, G protein-coupled receptor kinases (GRKs), arrestins and other downstream signaling molecules. GRKs and arrestins are key molecules participating in the desensitization of GPCRs. In addition, adenylyl cyclase (AC), phospholipase C, phosphodiesterases (PDEs), cyclic adenosine monophosphate (cAMP), cyclic guanosine monophosphate (cGMP), inositol triphosphate,  $Ca^{2+}$ , etc. are also involved in GPCR signal transduction. Classical theory suggests that upon binding to a ligand, a GPCR undergoes a conformational change that promotes interaction of its intracellular part with a G protein. The exchange of GDP for GTP in the G protein results in the dissociation of the heterotrimeric G protein into the  $G_{\alpha}$  subunit and the  $G_{\beta\gamma}$  subunits. Both of which interact with various effectors to regulate second messenger production or ion channel opening. Over the past two decades, numerous studies have shown that receptor-bound arrestins trigger a second round of signaling that is quite different from that mediated by G proteins [1]. Some GPCR ligands are ‘balanced’ while some others are ‘biased’ in terms of their preferences on activating one type of G protein or arrestin signal over another [1]. Adding to this complexity is the capability of GPCRs to form heterodimers, and the new receptor species thus formed can have signaling properties different from those of their parent receptors. Thus, GPCR heterodimers constitute very interesting targets for future drugs [2,3].

The human GPCR superfamily have more than 800 members. Some GPCRs have sensory function mediating smell, taste, vision or pheromone signals. GPCRs without sensory function participate in growth, development, reproduction and other physiological processes. They are also involved in the development of diseases including cardiovascular diseases, diabetes, cancer, immune disorders, infectious diseases, neurological and mental diseases. GPCRs can be divided into five categories according to their structures, as shown in Table 1. Such taxonomy is known as the GRAFS nomenclature system [4].

**Table 1.** GPCR Classes.

Categories	Representative Receptors	Number of Receptors with Known Ligands	Number of Orphan Receptors	Number of Olfactory Receptors	Number of Visual Receptors	Number of Taste Receptors
Glutamate or class C	metabolic glutamate receptor, calcium sensing receptor, GABAB receptor, taste 1 receptor, pheromone V2 receptor	12	8	-	-	3
Rhodopsin or class A	Various small molecule receptors, neurotransmitter receptor, peptide and hormone receptors, olfactory receptor, visual receptor, pheromone V1 receptor	197	87	390	10	-
Adhesion	CD97, GPR133, GPR144	0	26	-	-	-
Frizzled/ Taste 2	Frizzled receptor, taste 2 receptor	11	0	-	-	30
Secretin or class B	Glucagon receptor, vasoactive intestinal peptide receptor, secretin	15	-	-	-	-

The orphan receptors in Table 1 refer to GPCRs lacking endogenous ligands. Although molecular biology and bioinformatic techniques have enabled the identification of orphan receptors, it has been a great challenge to find their endogenous ligands. Over 300 GPCRs have been de-orphaned in the last few decades. These receptors are potential cardiovascular disease targets. For example, the  $G_i$  protein-coupled receptor APJ, once considered an orphan receptor, is found to be a receptor with its endogenous ligand apelin, which exerts peripheral and central cardiovascular effects by promoting vasodilation, angiogenesis and contractility

of the heart [5]. For receptors that are not de-orphaned, endogenous ligands can be bypassed to develop alternative ligand drugs. Modulators of GPR119, GPR35, GPR55, MAS and GPR84 have already entered clinical trials [6].

GPCRs are among the most well-established drug targets. With the development of structural biology and other technologies, drugs targeting GPCRs are rapidly developed and utilized. New GPCR targets continue to emerge, bringing new opportunities for drug development.

### *1.2. GPCR and Cardiovascular Disease*

Cardiovascular diseases are the leading cause of mortality and morbidity worldwide, accounting for a quarter of global deaths every year [7]. Myocardial infarction, cardiomyopathy, valvular heart disease, viral myocarditis, chronic hypertension, coronary artery disease, heart injuries, etc. can eventually lead to heart failure. Heart failure is a complex clinical syndrome characterized by a reduced pumping and/or refilling capacity of the heart. Physiologically, heart failure can be defined as insufficiency of the cardiac output to meet metabolic demands. Globally, about 26 million adults suffer from heart failure, and therefore heart failure is defined as a global pandemic. The five-year mortality rate of heart failure is as high as 42.3% [8]. Patients with heart failure usually require long and repeated hospitalization. A rising patient population in heart failure brings serious economic, social and personal burdens.

GPCRs are widely expressed in the cardiovascular system and the corresponding cell types, such as cardiomyocytes, fibroblasts, endothelial cells and vascular smooth muscle cells. Over 200 GPCRs participate in the regulation of cardiovascular function. GPCRs present in the cardiovascular system are involved in the sensing and responses to various stimuli (such as mechanical stress, hormones, cytokines and growth factors). They also participate in the development of cardiovascular diseases, comprising 24% of the drug targets in the cardiovascular system [9]. The most well-studied ones include adrenoceptors (ARs), angiotensin receptors (ATRs), muscarinic receptors, endothelin receptors, and adenosine receptors.

ATRs, especially the AT1R, play a key role in the pathophysiology of the cardiovascular system. AT1Rs are expressed in the heart as well as in blood vessels. Angiotensin II acts on vascular AT1Rs to produce vasoconstriction causing blood pressure to rise. Overexpression of the AT1R promotes myocardial fibrosis and hypertrophy while its knockdown enhances cardiac function after myocardial infarction, suggesting that AT1R mediates a harmful effect on the heart. Myocardial AT1R is upregulated during ischemia and is associated with adverse cardiac remodeling in heart failure [10]. Therefore, AT1R antagonists (or angiotensin II receptor blockers, ARBs) are widely used in the treatment of cardiovascular diseases such as hypertension, coronary artery disease and heart failure. The AT1R couples to  $G_{\alpha_q}$  proteins and it may also mediate signals via  $G_{\beta\gamma}$  subunits and  $\beta$ -arrestins [11]. Recent studies have suggested that activation of  $\beta$ -arrestin signaling in addition to the blockade of G protein signaling downstream of the AT1R may provide a beneficial cardioprotective effect in heart failure. This may lead to the development of a superior class of ARBs [12,13]. Thus, similar basic studies on GPCR signal transduction may open up new opportunities for the development of future cardiovascular drugs.

## **2. $\beta$ -AR Signaling in the Cardiovascular System**

### *2.1. $\beta$ -ARs in the Cardiovascular System*

Vital body functions such as heart beat and blood pressure maintenance are under the control of the autonomic nervous system composed of the sympathetic nervous system (SNS) and the parasympathetic nervous system. Target organs of the cardiovascular system such as the heart and peripheral arteries respond to sympathetic stimulation by means of ARs expressed on the plasma membranes of target cells. Norepinephrine secreted from sympathetic nerve terminals and circulatory catecholamines (mainly epinephrine with a small amount of norepinephrine) are the endogenous agonists of these receptors. In vascular smooth muscles, catecholamines stimulate  $\alpha$ -ARs to cause vasoconstriction and  $\beta_2$ -ARs to cause vasodilation. In the heart, stimulation of  $\beta$ -ARs increases heart rate and myocardial contractility. Adaptive activation of the SNS increases blood pressure and cardiac output to meet the metabolic requirements of the body.

$\beta$ -ARs are the most abundant GPCR members expressed in mammalian hearts. All the three subtypes of

the  $\beta$ -ARs,  $\beta_1$ ,  $\beta_2$  and  $\beta_3$ , exist in the human heart. The  $\beta_1$ -AR has the highest abundance followed by the  $\beta_2$ -AR. Under normal conditions, the expression level of the  $\beta_3$ -AR is much lower [14]. The expression patterns of  $\beta$ -ARs in specific cells is worth exploring and refining. The most abundant cell types in the mammalian heart are cardiomyocytes, cardiac fibroblasts, endothelial cells and vascular smooth muscle cells. Among them, cardiomyocytes account for about 30% in quantity and 70% in mass and volume, constituting the myocardium and providing contractile force for the heart [15]. Recent data show that  $\beta_1$ -ARs are expressed in every cardiomyocyte in mice [16]. Cardiac fibroblasts, endothelial cells and vascular smooth muscle cells generally express  $\beta_2$ -ARs. With the increase of age, the level of  $\beta_1$ -ARs in human ventricular muscles decreases, especially in women [17]. But sex and age have no impact on  $\beta$ -AR-mediated inotropy in isolated human atrial muscles [18].

## 2.2. Cardiac $\beta$ -AR Signaling

### 2.2.1. Classical $\beta$ -AR Signaling in Cardiomyocytes

$\beta$ -ARs are  $G_s$  protein-coupled receptors. Signal transduction begins with the binding of an adrenergic agonist to a  $\beta$ -AR causing it to couple to intracellular  $G_s$  proteins. The activated  $G_s$  protein enhances cAMP synthesis by AC, thereby activating cAMP-dependent protein kinase (PKA) which subsequently phosphorylates various PKA substrates to produce a cellular response. In cardiomyocytes, these PKA substrates include proteins responsible for intracellular  $Ca^{2+}$  regulation (e.g. phospholamban (PLB), L-type calcium channel (LTCC) and ryanodine receptor (RyR)), other cation channels involved in the generation of an action potential (e.g. the delayed rectifier potassium channel  $I_{Ks}$ ) and regulatory proteins in the contractile machinery (e.g. cardiac troponin I and cardiac myosin-binding protein C).

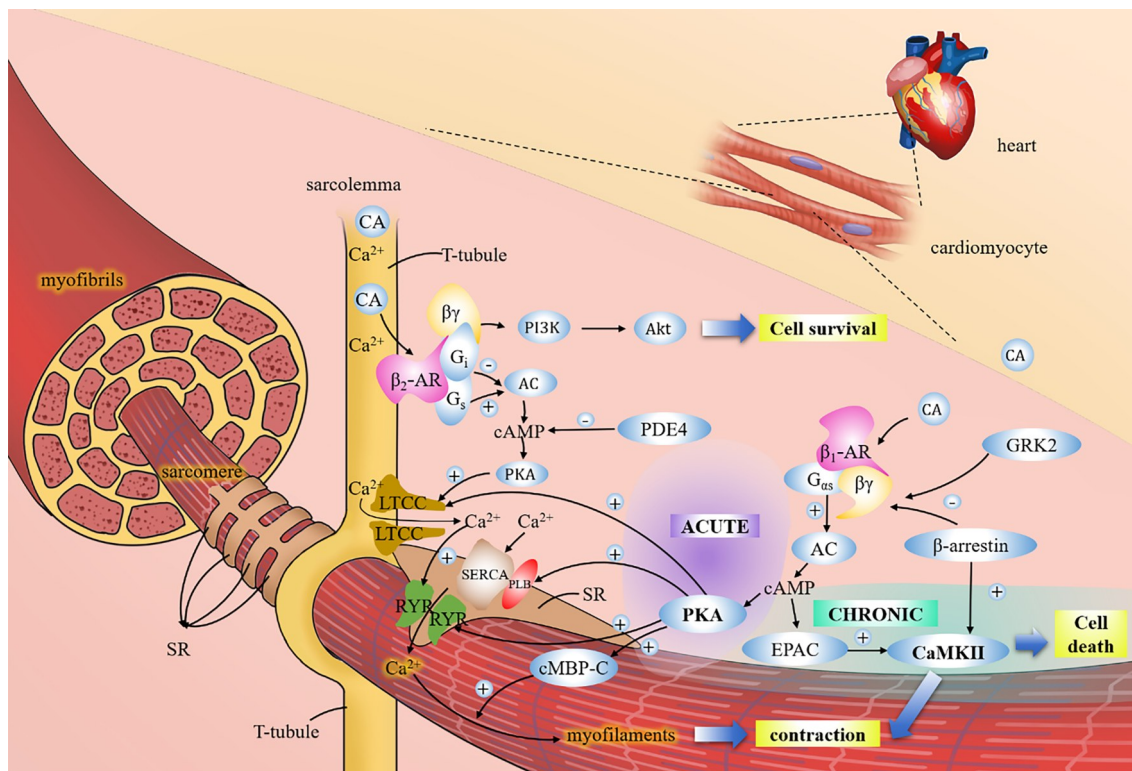
Excitation-contraction coupling is the mechanism to relay electrical activity in a muscle cell to the process of cellular contraction. The transport of  $Ca^{2+}$  across different membranes play a central role in this process. LTCC on the plasma membrane (sarcolemma) is responsible for the voltage-dependent influx of extracellular  $Ca^{2+}$ , which is spatially coupled with a cluster of RyRs on subsarcolemmal cisternae of sarcoplasmic reticulum (SR) responsible for the release of stored  $Ca^{2+}$  into the cytosol. An action potential in a cardiomyocyte triggers a small influx of  $Ca^{2+}$  ( $I_{CaL}$ ) through LTCC. The increase in local  $Ca^{2+}$  levels induces a large efflux of stored  $Ca^{2+}$  via RyRs in a process known as calcium-induced calcium release [19], generating  $Ca^{2+}$  sparks. Spatial synchronization of these  $Ca^{2+}$  sparks results in a large surge of cytosolic  $Ca^{2+}$  concentration ( $[Ca^{2+}]_i$ ). Binding of  $Ca^{2+}$  to cardiac troponin C activates myofilaments and initiates cell contraction. In the repolarization phase of the action potential, actions of the sarcolemmal sodium-calcium exchanger to transport intracellular  $Ca^{2+}$  out of the cell and that of the sarcoplasmic/endoplasmic reticulum calcium ATPase (SERCA) to refill the  $Ca^{2+}$  pool restore the resting  $[Ca^{2+}]_i$  level, allowing the cardiomyocyte to relax.

Acute  $\beta$ -adrenergic stimulation increases myocardial contractility through enhancement of  $Ca^{2+}$  transport, myofilament  $Ca^{2+}$  sensitivity and membrane repolarization. These effects are the result of increased PKA-dependent phosphorylation of proteins. Studies on isolated cardiomyocytes have shown that  $\beta$ -adrenergic stimulation produces a positive inotropic effect and increases  $I_{Ks}$  and both of these effects depends on PKA activation [20,21] (Figure 1).

### 2.2.2. Differential Effects of Cardiac $\beta$ -AR Subtype Signaling in Regulating a Contractile Response

The  $\beta_1$ -AR couples to  $G_s$  protein while the  $\beta_2$ -AR and the  $\beta_3$ -AR couple to both  $G_s$  and  $G_i$  proteins [22]. The  $\beta_2$ -AR can 'switch' its G protein-coupling preference from  $G_s$  to  $G_i$  and this is dependent on the phosphorylation of the  $\beta_2$ -AR by PKA [23].  $G_i$  inhibits the activity of the  $G_s$ -activated AC in synthesizing cAMP. In cardiomyocytes,  $\beta_2$ -AR- $G_i$  signaling restricts the inotropic response mediated by the  $G_s$ -AC-cAMP-PKA signaling cascade [24] (Figure 1). Studies on rabbit, eel, frog, rat, dog, human and other species have found that  $\beta_3$ -ARs generally mediate a negative inotropic effect or are nonfunctional in the heart [14,25]. The  $G_i$  and the nitric oxide (NO) pathways have been implicated in the negative effect of the  $\beta_3$ -AR but details of the signal transduction mechanism (e.g. the link between  $G_i$  protein-coupling and the production of NO and the number of cell types involved) are still unclear [25].





**Figure 1.** Schematic representation of  $\beta$ -AR signaling in cardiomyocytes. The  $\beta_1$ -AR and the  $\beta_2$ -AR mediate the biological effects of catecholamines (CA) on cardiomyocytes. These effects include one on contractility enhancement (i. e. a positive inotropic effect) and another one on cell survival and death regulation. Though both of these receptors by means of coupling to  $G_s$  mediate a positive inotropic effect, the promiscuously  $G_i$ -coupled  $\beta_2$ -AR also mediates a negative effect on contractility and a pro-survival effect. The positive inotropic effect of acute  $\beta_1$  or  $\beta_2$  stimulation depends on the activation of PKA and the resultant phosphorylation of proteins (LTCC, PLB, RyR, cMBP-C, etc.) that promote the mobilization and efficiency of cellular  $Ca^{2+}$ . The  $\beta_2$ -AR- $G_s$ -cAMP signal is compartmentalized near t-tubules and caveolae due to subcellular localization of the  $\beta_2$ -ARs and PDE4 (which hydrolyzes cAMP) at these membrane compartments. On the other hand, the  $\beta_1$ -AR- $G_s$ -cAMP signal is a global one thanks to the even distribution of  $\beta_1$ -ARs on the sarcolemma. ‘Chronic’ (long-term) stimulation of the  $\beta_1$ -AR turns on a  $\beta_1$ -AR-CaMKII signal, which mediates both a positive inotropic effect and a pro-apoptotic effect. GRKs and  $\beta$ -arrestins are important regulators of cardiac  $\beta$ -AR-signaling. They take part in homologous desensitization that terminates CA-triggered  $\beta$ -AR- $G_s$  signaling. GRK2 is the most abundant GRK in the heart and has been proven to be a strong negative regulator of  $\beta$ -AR- $G_s$  signaling. The role of  $\beta$ -arrestin is more diverse because  $\beta$ -arrestin also mediates signaling of its own and it has been implicated in the activation of the  $\beta_1$ -AR-CaMKII signal as well as in heterologous desensitization of the  $\beta_2$ -AR and cardioprotection (not shown). Heart diseases, particularly heart failure, is manifested by excessive CA stimulation and changes of the expression pattern of proteins in this signaling network, causing disturbances on the normal balance of cellular function and well-being. Thus, targeting on the cardiac  $\beta$ -AR signaling provides an important means to treat heart diseases. See the text for details. AC, adenylyl cyclase; Akt, protein kinase B;  $\beta_1$ -AR,  $\beta_1$ -adrenoceptor;  $\beta_2$ -AR,  $\beta_2$ -adrenoceptor;  $\beta\gamma$ ,  $G_{\beta\gamma}$  subunits; CA, catecholamine; CaMKII,  $Ca^{2+}$ /calmodulin-dependent protein kinase II; cAMP, cyclic adenosine monophosphate; cMBP-C, cardiac myosin-binding protein C; EPAC, exchange protein activated by cAMP; GRK2, G protein-coupled receptor kinase 2;  $G_{\alpha s}$ ,  $\alpha$  subunit of the stimulatory G protein;  $G_s$ , stimulatory G protein;  $G_i$ , inhibitory G protein; LTCC, L-type calcium channel; PDE, phosphodiesterase; PI3K, phosphatidylinositol 3 kinase; PKA, cAMP-dependent protein kinase; PLB, phospholamban; RyR, ryanodine receptor; SERCA, sarcoplasmic/endoplasmic reticulum calcium ATPase; SR, sarcoplasmic reticulum.

### 2.2.3. Pathophysiological Role of Cardiac $\beta$ -AR Signaling

$\beta$ -Adrenergic stimulation is a powerful means to increase cardiac output in the fight-or-flight state but if the stimulation is continued, it will cause harm to the heart by promoting detrimental  $\beta$ -AR signaling. Dysregulation of the cardiac  $\beta$ -AR signaling is central to the pathogenesis of heart failure. In compensated heart failure, cardiac output and blood pressure is maintained, despite with a lower cardiac reserve, by

activation of neuroendocrine axes, for instance the SNS and the renin-angiotensin-aldosterone system. A sustained increase of catecholamine levels is a leading feature of this mechanism [18]. In the failing hearts, chronic sympathetic stimulation ultimately leads to cardiomyocyte death and maladaptive cardiac remodeling, precipitating decompensation [26].

$\beta_1$ -AR signaling and  $\beta_2$ -AR signaling are diverged in their effects on cardiomyocyte survival and death. Studies have implicated the central role of the  $\beta_1$ -AR in heart failure. Of particular importance is that chronic stimulation of the  $\beta_1$ -AR activates a cardiotoxic (pro-apoptotic)  $\text{Ca}^{2+}$ /calmodulin-dependent protein kinase II (CaMKII)-dependent signal transduction pathway [27]. In contrast,  $\beta_2$ -AR signaling is largely cardioprotective. In particular,  $\beta_2$ -AR signaling involves a  $\text{G}_i$ - $\text{G}_{\beta\gamma}$ -phosphatidylinositol 3 kinase (PI3K) - protein kinase B (Akt) antiapoptotic pathway [28] (Figure 1). This is, however, a greatly simplified picture. As will be discussed in the following section, regulatory modification of  $\beta$ -AR signaling can have profound impacts on the biological effects produced.

Persistent stimulation of the cardiac  $\beta$ -AR induces cardiac hypertrophy and fibrosis and cardiomyocyte apoptosis [29], and these pathological changes are the basis of cardiac remodeling in heart failure. Evidence suggests that paracrine interactions between cardiomyocytes, cardiac fibroblasts and other cell types are key to this process. Cardiac fibroblasts play an important role in cardiac remodeling, fibrosis and hypertrophy due to their involvement in cell proliferation, extracellular matrix production and autocrine/paracrine signaling. A study on a transgenic mouse model has shown that sustained activation of the  $\beta_2$ -AR- $\text{G}_s$ -PKA pathway in myofibroblasts promotes cardiac hypertrophy possibly via a paracrine effect [30]. In addition, activation of the  $\beta_2$ -AR in cardiac fibroblasts upregulates the pleiotropic pro-inflammatory cytokine interleukin-6, also a hypertrophic factor in the heart, via different signaling mechanisms [31,32]. Conversely, paracrine factors released from cardiomyocytes in response to sustained  $\beta$ -adrenergic stimulation may promote the growth of cardiac fibroblasts and consequently induce myocardial fibrosis [33]. A recent study has identified the adhesive cell surface protein galectin-3 as a key regulatory component in promoting inflammatory cell mobilization, fibroblast activation and myocardial fibrosis [34]. Galectin-3 is upregulated in cardiac-restricted  $\beta_2$ -AR transgenic mice [34], and its serum levels are also increased in human heart failure [35] and post-myocardial infarction [36]. Another study has found that  $\beta$ -adrenergic stimulation enhances cardiac expression of galectin-3 through the Hippo signaling pathway [37]. Interestingly,  $\beta_2$ -adrenergic stimulation in cardiac fibroblasts alone promotes autophagy and this is correlated with an enhanced degradation of collagen. Thus,  $\beta_2$ -AR signaling in cardiac fibroblasts may actually reduce cardiac fibrosis [38].

### 2.3. Regulation of Cardiac $\beta$ -AR Signaling and Its Implications

#### 2.3.1. Upregulation and Downregulation

In heart failure, chronic elevation of catecholamines leads to downregulation of the cardiac  $\beta_1$ -AR while the expression level of the cardiac  $\beta_2$ -AR remains unchanged [39]. Reduced transcription of the  $\beta_1$ -AR is the primary cause of the downregulation [40]. Hence, the ratio of  $\beta_1$ -AR to  $\beta_2$ -AR drops from about 4:1 in the normal human heart to about 3:2 in the failing heart. This is accompanied by subsensitivity of the  $\beta_1$ -AR and  $\beta_2$ -AR signal transduction pathways, a leading cause of cardiac insufficiency in heart failure [39].

Downregulation of the cardiac  $\beta_1$ -AR is viewed as a protective mechanism to counteract excessive sympathetic stimulation but it also aggravates contractile dysfunction in heart failure. Despite of the downregulation, residual  $\beta_1$ -ARs still mediate a significant cardiotoxic effect of catecholamines. The result is a progressive loss of myocytes and myocardial contractile function in the failing heart [41,42]. Given the important role of this process in the pathogenesis of heart failure, the use of  $\beta_1$ -AR antagonists becomes logical. Indeed, clinical data have suggested that  $\beta_1$ -AR antagonists not only blocked the cardiotoxic  $\beta_1$ -AR pathway and improved survival in heart failure [43], but also restored the number of downregulated cardiac  $\beta_1$ -ARs and improved cardiac function in the long run [44,45].

Heart failure is also associated with upregulation of other proteins involved in  $\beta$ -AR signaling, for instance  $\text{G}_i$  proteins and GRK2 [44,46].  $\text{G}_i$  proteins and GRK2 are negative regulators of  $\beta$ -AR- $\text{G}_s$ -cAMP signaling in cardiomyocytes (Figure 1). Their upregulation in heart failure contributes to contractile dysfunction as detailed below.

Manipulation of  $\beta$ -AR levels in genetic animal models has provided important insights into the role of  $\beta$

-ARs in heart failure. In cardiac-specific overexpression mouse models,  $\beta_2$ -ARs at moderate levels (30-fold over normal) reduced the incidence of heart failure while  $\beta_2$ -ARs at high levels (300-fold or higher) led to heart failure [47,48]. Similarly, overexpression of the  $\beta_1$ -AR in mouse hearts for 15-fold led to spontaneous heart failure and lower levels of the  $\beta_1$ -AR (5-fold) led to cardiac hypertrophy, consistent with the detrimental effect of persistent  $\beta_1$  stimulation [49].

### 2.3.2. Desensitization

Upon  $\beta$ -adrenergic stimulation,  $\beta$ -AR signaling is attenuated through cooperative actions of a series of regulatory molecules. This regulatory process, known as desensitization, reduces the responsiveness of a GPCR to continuous or repeated stimuli. In one of the most well-characterized processes called homologous desensitization, activation of  $\beta$ -ARs ( $\beta_1$  and  $\beta_2$ ) promotes their own phosphorylation by GRKs at specific sites on their CTs.  $\beta$ -Arrestins are then recruited to the phosphorylated receptor sites to form complexes with the  $\beta$ -ARs.  $\beta$ -Arrestins sterically inhibit the coupling of  $\beta$ -ARs with G proteins, thus weakening G protein signaling. They also interact with proteins in the endocytic machinery such as clathrin to initiate receptor internalization. Internalized receptors are degraded or recycled, and thus losing their abilities temporally or permanently to interact with agonists. Agonist-induced receptor internalization is more rapid and obvious in  $\beta_2$ -ARs, but less sensitive in  $\beta_1$ -ARs [50]. Overall, homologous desensitization reduces G protein-mediated signal transduction, and is believed to produce a beneficial effect on the failing heart by restricting the  $\beta_1$ -AR-mediated cardiotoxic pathway [22], but it may also, to a lesser extent, contribute to the functional decline of the failing heart by causing  $\beta_2$ -AR subsensitivity [39].

Apart from GRKs, phosphorylation of GPCRs by second messenger-dependent protein kinases (e. g. PKA and protein kinase C (PKC)) provides another means for GPCR signal regulation, that is, heterologous desensitization. The  $\beta_2$ -AR is among the most well-studied GPCRs in the process of heterologous desensitization. Stimulation of  $G_s$  protein- or  $G_q$  protein-coupled receptors promotes phosphorylation of the  $\beta_2$ -AR by PKA and PKC, respectively, leading to functional uncoupling of the  $\beta_2$ -AR from the  $G_s$  protein-mediated pathway without receptor internalization [51]. Heterologous desensitization of the  $\beta_2$ -AR is a common mechanism for the suppression of  $\beta$ -AR-stimulated myocyte contractile function by different hormones [51]. Importantly, it is believed to play a major role in causing  $\beta_2$ -AR subsensitivity in heart failure due to upregulation of  $G_i$  proteins and, hence, augmentation of the inhibitory effect on  $G_s$ -cAMP signaling [44]. Studies have shown that other proteins (e. g. PDE4D and  $\beta$ -arrestin2, see below) also participate in heterologous desensitization of the  $\beta_2$ -AR [51].

### 2.3.3. Spatial Distribution

Cardiomyocytes display a highly sophisticated membrane structure. Small pits (caveolae) and invaginations (transverse or T-tubules) exist on the surface of the plasma membrane of a cardiomyocyte. T-tubules extend from the cell surface deep into the cell and connected with longitudinal tubules to form the transverse-axial tubules system, which serves to conduct action potential and extracellular  $Ca^{2+}$  to the vicinity of each of the smallest unit of contraction – the sarcomere. Integrity of this membrane structure is critical for spatial synchronization of calcium-induced calcium release and, hence, coordinated contraction of sarcomeres throughout the cardiomyocyte upon induction by an action potential. Heart failure is manifested by an aberrant change of this membrane structure and relocation of proteins in it. This can cause important changes on the compartmentalized signals of cAMP and  $Ca^{2+}$  as discussed below. In late-stage heart failure, disordered  $Ca^{2+}$  waves occur more readily in cardiomyocytes, promoting arrhythmogenesis [52].

In a healthy cardiomyocyte,  $\beta_1$ -ARs are evenly distributed on the sarcolemma while  $\beta_2$ -ARs are located on T-tubules and caveolae [53]. In addition,  $\beta_2$ -ARs are generally located within signal complexes containing LTCC, PDEs,  $G_i$ , and other proteins involved in signal transduction [51,54,55]. In particular, PDE4 limits diffusion of cAMP, so that the  $\beta_2$ -AR-mediated cAMP signal is generally confined to the vicinities of T-tubules and caveolae as opposed to the  $\beta_1$ -AR-mediated cAMP signal which is global [52,54] (Figure 1). Our recent study has found that  $\beta_2$ -adrenergic stimulation transforms a  $\beta_1$ -AR-mediated cAMP signal from the global mode to the local mode at nanometer level [56]. We call this PDE4-dependent  $\beta_2$ -AR signal localization spillover effect ‘offside’ compartmentalization. It prevents the  $\beta_1$ -stimulated PKA activity from

acting on RyRs adjacent to activated  $\beta_2$ -ARs, which may to some extent limit the  $\beta_1$ -AR-mediated cardiotoxicity and sharpen the transient  $\beta_1$ -AR response of sympathetic stimulation. Moreover, the  $\beta_2$ -AR is directly associated with an LTCC in a signal complex that also contains a  $G_s$  protein, AC, PKA, and the counterbalancing phosphatase PP2A (type 2A protein phosphatase) [57]. Thus, the compartmentalized (offside or otherwise)  $\beta_2$ -AR signaling is uncoupled from a global cAMP signal and phosphorylation of most PKA substrates in a cardiomyocyte but can still effectively enhance  $I_{Ca,L}$  and a contractile response [58].

Heart failure is characterized by progressive loss of T-tubules in cardiomyocytes.  $\beta_2$ -ARs originally located on T-tubules are relocated to cell crests of cardiomyocytes. This leads to the loss of cAMP compartmentation with the production of a cAMP signal similar to the one elicited by  $\beta_1$  stimulation [52]. LTCCs also exhibit similar relocation from T-tubules to cell crests in heart failure and this change has been implicated as a pathological basis for arrhythmogenesis at single cell level [59]. Moreover,  $\beta_2$ -ARs and LTCCs have been modelled to locate in cell crests and T-tubules of a cardiomyocyte *in silico*, which reveals enhanced phosphorylation of LTCC by PKA and, hence, increased  $I_{Ca,L}$  when they are present in cell crests [60]. Thus, spatial redistribution of cardiac  $\beta_2$ -ARs in heart failure may enhance the pro-arrhythmogenic effect of  $\beta$ -AR-cAMP signaling.

#### 2.3.4. Other Regulatory Effects of GRKs and $\beta$ -Arrestins

GRKs and  $\beta$ -arrestins can regulate GPCR signaling by mechanisms other than homologous desensitization. The GRK family regulates various GPCRs. Among them, GRK2, GRK3 and GRK5 are highly expressed in the human heart. GRK2 and GRK5 are expressed in almost all cardiac cells and upregulated in heart failure, whereas GRK3 is detected only in cardiomyocytes [61]. GRK2 and GRK5 phosphorylate different sites on the CT of the  $\beta_2$ -AR and this has biological implications [62]. GRK3 phosphorylates  $\alpha_1$ -ARs in the heart and plays no role on  $\beta$ -AR signaling [63].

Numerous studies have pinpointed GRK2 as a main culprit for cardiodepression, cardiac hypertrophy and maladaptive cardiac remodeling in the pathogenesis of heart failure [64–70], as upregulation of GRK2 occurs early in human heart diseases and is partly responsible for the diminished responses to adrenergic stimulation [71]. Particularly, in a murine model of pressure overload-induced heart failure, cardiac-specific overexpression of  $\beta_2$ -ARs with deletion of all PKA phosphorylation sites ( $\beta_2$ -AR PKA-) showed earlier disease-onset, more severe structural and functional cardiac damage and higher cardiac expression of GRK2 and  $G_i$  proteins as compared with mice overexpressing wild-type human  $\beta_2$ -ARs or  $\beta_2$ -ARs with deletion of all GRK phosphorylation sites [64]. Importantly, the blunted  $\beta$ -AR-mediated positive inotropic effect in the  $\beta_2$ -AR PKA- mice could be rescued by the  $G_i$  inhibitor pertussis toxin. These results indicate that GRK2-induced phosphorylation of  $\beta_2$ -ARs results in  $G_i$ -biased  $\beta_2$ -AR signaling, linking upregulation of GRK2 to cardiodepression, maladaptive cardiac remodeling and heart failure. In heart failure, the GRK2-promoted  $G_i$  signaling not only inhibits the  $\beta_2$ -AR-mediated positive inotropic effect but also cross-inhibits the  $\beta_1$ -AR-mediated positive inotropic effect. Increased cardiac expression of  $G_i$  plays a central role in the cross-inhibition. Recent structural biology data have revealed the structural basis of receptor-coupling to different G proteins by both the  $\beta_1$ - and  $\beta_2$ -AR [72, 73]. Under normal conditions, the coupling preference to  $G_i$  is much lower than that to  $G_s$  for both  $\beta$ -AR subtypes. Nevertheless, current evidence is in favor that the  $\beta_2$ -AR- $G_i$  pathway plays an important role in the pathophysiology of human heart failure and Takotsubo syndrome [44, 74, 75]. Activation of this pathway induces cardiodepression, but at the same time produces a cardioprotective effect [74, 75], corroborating the perception that  $\beta_2$ -AR- $G_i$  signaling is equivalent to an endogenous  $\beta_1$ -AR antagonist in the heart [31]. Similar to the use of  $\beta$ -blockers in heart failure where low doses of them improve cardiac function in the long run whereas high doses of  $\beta$ -blockers induce acute cardiac decompensation, therefore, the GRK2-promoted  $\beta_2$ -AR- $G_i$  signaling needs to be kept in check to avoid functional impairment while allowing delivery of a right amount of protective signals to the failing heart.

Increased levels of GRK5 in the failing hearts has been suggested to be a maladaptive mechanism due to the key role of GRK5 in cardiac hypertrophy [76, 77]. Interestingly, carriers of the GRK5-Leu41 allele, which confers more  $\beta$ -AR desensitization and protection against catecholamine-induced cardiomyopathy in mice, have lower mortality than the wild-type GRK5-Gln4 allele carriers in African Americans with heart failure or cardiac ischemia [78]. Additionally, GRK5 has been implicated in  $\beta_1$ -AR-mediated  $\beta$ -arrestin2 signaling and



the resultant cardiac fibrosis-inducing effect of the  $\beta$ -blocker metoprolol in wild-type mice and in neonatal rat cardiomyocytes [79]. In this study, the  $\beta$ -blocker acted as an antagonist for the G protein-dependent pathway and as an agonist for the  $\beta$ -arrestin-dependent pathway. Phosphorylation of  $\beta_1$ -ARs by GRK5 is the trigger for the recruitment of  $\beta$ -arrestins that set off signal transduction (presumably via activation of ERK) in a G protein-independent manner. This represents a classical example of  $\beta$ -arrestin-biased signaling, and metoprolol is defined as a  $\beta$ -arrestin-biased ligand in this paradigm. However, it should be noted that  $\beta$ -blockers atenolol, metoprolol and propranolol also prevent cardiac fibrosis induced by  $\beta$ -adrenergic stimulation in cardiomyocytes [33]. The  $\beta$ -blocker carvedilol has also been suggested to be a  $\beta$ -arrestin-biased ligand at the  $\beta_1$ -AR and the GRK5/GRK6-dependent  $\beta$ -arrestin-biased signaling it induced is protective to cardiomyocytes via upregulation of multiple cardioprotective microRNAs [80]. GRK5 exhibits both harmful and protective effects on the heart, which needs to be further studied.

Interestingly, GRK2 and  $\beta$ -arrestin1 have been found to be involved in the offside compartmentalization effect of  $\beta_2$ -AR stimulation on  $\beta_1$ -AR signaling [56]. Activation of the  $\beta_2$ -AR leads to the translocation of GRK2 to the plasma membrane. GRK2 can also act on a  $\beta_1$ -AR in close proximity to the activated  $\beta_2$ -AR. Phosphorylation of the  $\beta_1$ -AR at the CT by GRK2 then triggers recruitment of  $\beta$ -arrestin1 to the  $\beta_1$ -AR, and the  $\beta$ -arrestin1 subsequently attracted PDEs to come close to the  $\beta_1$ -AR. The latter limits  $\beta_1$ -AR signaling by hydrolyzing cAMP. In contrast, heterologous desensitization of the  $\beta_2$ -AR by activation of other GPCRs involves  $\beta$ -arrestin2 but not GRKs. Phosphorylation of the  $\beta_2$ -AR by second messenger kinases likely triggers recruitment of  $\beta$ -arrestin2 that brings along PDE4D to limit  $\beta_2$ -AR-cAMP signaling [51].

### 2.3.5. CaMKII

CaMKII is an important molecule for the transmission of  $\text{Ca}^{2+}$  signals. Four isoforms of CaMKII exist, in which the  $\delta$  isoform is the major one in mammalian hearts. CaMKII positively regulates  $\text{Ca}^{2+}$  signaling in cardiomyocytes through phosphorylation of LTCCs, RyRs and PLB [81,82]. Knockout of CaMKII $\delta$  decreases  $\beta$ -AR-stimulated  $I_{\text{Ca,L}}$  response in ventricular myocytes and reduces cardiac reserve and heart rate in response to  $\beta$ -adrenergic stimulation in mice, suggesting that CaMKII $\delta$  is involved in the  $\beta$ -AR-mediated cardiac stimulatory effect [83].

We have found that  $\beta_1$ -adrenergic stimulation produces an early but rapidly desensitized cAMP-PKA signal, followed by a slow-onset but sustained CaMKII signal and both of these signals could facilitate biological processes such as SR  $\text{Ca}^{2+}$  refilling in cardiomyocytes [84]. Recently, a negative feedback mechanism on CaMKII activity regulation was identified in cardiomyocytes, in which CaMKII phosphorylates and activates PDE4D, causing a reduction in cAMP signaling which positively regulates CaMKII activity [85]. This may provide a mechanistic explanation for the rapid desensitization of the  $\beta_1$ -AR-cAMP signal in our observation. Our study suggests that the  $\beta_1$ -AR-mediated myocardial contractile response is sustained by switching from cAMP-PKA signaling to CaMKII signaling upon prolonged stimulation [84] (Figure 1).

Activation of CaMKII has been implicated in the detrimental effects of  $\beta$ -AR signaling on the heart. Particularly, sustained  $\beta_1$ -adrenergic stimulation has been shown to induce cardiomyocyte apoptosis through a CaMKII-dependent but PKA-independent pathway [86]. The involvement of CaMKII in  $\beta$ -AR-mediated cardiomyocyte apoptosis has also been demonstrated in vivo [87]. Moreover, CaMKII $\delta$  also participates in  $\beta$ -AR-mediated SR  $\text{Ca}^{2+}$  leak in cardiomyocytes by enhancing RyR2 phosphorylation and this mechanism may be involved in the induction of cardiomyopathy in mice subjected to chronic catecholamine stimulation [82]. The  $\beta_1$ -AR-activated CaMKII signal is also implicated in catecholamine-induced cardiac hypertrophy in neonatal rat cardiomyocytes [88]. In the failing hearts, activated CaMKII phosphorylates RyRs and subsequently promotes SR  $\text{Ca}^{2+}$  leakage, delayed afterdepolarization and tachycardia [89]. Inhibition of CaMKII but not PKA decreases RyR2 activity and arrhythmogenic  $\text{Ca}^{2+}$  release in response to  $\beta$ -adrenergic stimulation [90,91].

Different signal transduction mechanisms have been proposed to relay sustained  $\beta$ -adrenergic stimulation to the activation of CaMKII. These mechanisms may be categorized according to the involvement of exchange protein activated by cAMP (Epac)-dependent and/or PKA. Epac is a signaling molecule responsive to intracellular cAMP elevation independent of PKA [92,93]. In one of the most extensively

studied Epac-dependent mechanism, stimulation of the  $\beta_1$ -AR induces the formation of a complex containing  $\beta$ -arrestin, Epac1 and CaMKII, leading to CaMKII activation [94]. It is proposed that the  $\beta$ -arrestin that binds to the CT of the  $\beta_1$ -AR assumes a specific conformation which keeps CaMKII and Epac in a stable complex with the receptor, whereas the conformation of the  $\beta_2$ -AR-bound  $\beta$ -arrestin is incapable of recruiting CaMKII and Epac. This explains why the  $\beta_1$ -AR, but not the  $\beta_2$ -AR, is the relevant receptor for activating CaMKII signaling [94]. Further studies in cardiomyocytes suggests that  $\beta$ -AR-CaMKII signaling involves NO, and a  $\beta$ -AR-cAMP-Epac-PI3K-Akt-NOS1-CaMKII signaling cascade has been proposed to link  $\beta$ -adrenergic stimulation to increased SR  $\text{Ca}^{2+}$  leaks [95,96]. In the PKA-dependent mechanism, increased  $[\text{Ca}^{2+}]_i$  leads to CaMKII activation and the source of  $\text{Ca}^{2+}$  is cAMP-PKA-PLB-SR-mediated  $\text{Ca}^{2+}$  pool refilling [97]. This pathway has been shown to transmit a pro-cell death signal of  $\beta$ -adrenergic stimulation in cardiomyocytes. Interestingly, the same study has also discovered a cardioprotective  $\beta_1$ -AR-cAMP-Epac2-Rap1-Rac-ERK pathway. The regulatory effects of PKA on CaMKII expression and activity have also been demonstrated in vivo in transgenic mice with cardiac-specific overexpressed PKI (a peptide inhibitor of PKA). In particular, acute  $\beta$ -stimulation-induced CaMKII signaling that leads to heart rate and cardiomyocyte contractility increment was sensitive to PKI [20]. A recent study has proposed yet another mechanism of  $\beta_1$ -AR-stimulated CaMKII activation in cardiomyocytes that involves PKA, GRK5, SAP97,  $\beta$ -arrestin2 and Epac2 [27].

Recent experimental progress also holds promise for CaMKII inhibition in the treatment of heart failure and related myocardial abnormalities [98–100].

### 2.3.6. Other Regulatory Mechanisms of $\beta$ -AR Signaling in the Heart

Acute  $\beta$ -adrenergic stimulation with dobutamine produced positive inotropic effects in mouse hearts while sustained  $\beta$ -adrenergic stimulation with isoproterenol resulted in cardiac hypertrophy in mice. Both effects could be attenuated in transgenic mice lacking B56 $\alpha$ , a PP2A regulatory subunit highly expressed in the heart, indicating that PP2A is a potential regulator of cardiac function after  $\beta$ -AR agitation [101]. Another study has found that overexpression of the Raf kinase inhibitor protein produced a well-tolerated, persistent increase in cardiac contractility mediated by the  $\beta_1$ -AR via simultaneous activation of the  $\beta_2$ -AR subtype [102]. Signal transducers and activators of transcription 3 has been suggested to be a key transcriptional regulator of  $\beta$ -AR-mediated cardiac stress adaptation, pathological remodeling and heart failure [103]. Recently, we have found that 5-HT<sub>2B</sub> receptors formed heterodimers with  $\beta_2$ -ARs, promoting cardioprotective G<sub>i</sub> signaling with  $\beta_2$ -adrenergic stimulation [2]. We have also found that  $\beta_1$ -ARs and receptors of advanced glycation end products physically interacted with each other. Stimulation with either of their agonists generated a pro-cell death CaMKII signal with significant signal crosstalk, leading to cardiomyocyte injury and cardiac remodeling [104]. The G protein-coupled estrogen receptor 1, a G<sub>i</sub> protein-coupled receptor, has been suggested to moderate myocardial  $\text{Ca}^{2+}$  dynamics and cardiomyocyte contraction by limiting  $\beta_1$ -AR-cAMP-PKA signaling [105]. This study may provide a mechanistic basis for the effects of estrogen on cardiac function regulation, and possibly cardioprotection.

Non-coding micro single-stranded RNA (microRNA, miRNA) is a class of small-molecular transcription regulator. Studies have shown that miR-133 regulates multiple components of  $\beta_1$ -AR signaling and has a cardioprotective effect by reducing apoptosis and fibrosis in pressure overload-induced heart failure [106]. miR-145 improves cardiac dilatation and fibrosis and alleviates heart failure-related cardiac remodeling by upregulating  $\beta_2$ -ARs and downregulating CaMKII [107]. Downregulation of non-coding RNA circ-HIPK3 attenuates fibrosis and maintains myocardial function after myocardial infarction in mice through miR-17-3p [108].

## 3. Interventions of $\beta$ -AR Signaling and Cardiovascular Disease

### 3.1. $\beta$ -Blockers

$\beta$ -Blockers are widely used in tachyarrhythmias, coronary artery disease, hypertension and heart failure. Their use is considered to be a milestone in the treatment of heart failure [109]. Over the past six decades, three generations of  $\beta$ -blockers have been developed: the first generation nonselective  $\beta$ -blockers, the second generation cardioselective  $\beta$ -blockers (selectively antagonizing the  $\beta_1$ -AR), and the third generation vasodilating  $\beta$ -blockers (exhibiting vasodilating effects as a result of  $\alpha_1$ -AR blockade or endothelial nitric

oxide synthase (eNOS) activation via  $\beta_2$ -AR or  $\beta_3$ -AR agonism). Clinical studies have shown that the cardioselective  $\beta$ -blockers bisoprolol and metoprolol and the vasodilating  $\beta$ -blockers carvedilol and nebivolol significantly reduce morbidity and mortality from heart failure [110]. The reason causing the different efficacies of  $\beta$ -blockers in heart failure treatment is not totally clear, but it is quite certain that the side effect profiles of nonselective  $\beta$ -blockers are the key issue disfavoring their long-term use in heart failure and essential hypertension.

Propranolol, which has been widely used in clinical practice to treat arrhythmias, is a representative of the first generation  $\beta$ -blockers. They have similar affinities for the  $\beta_1$ -AR and the  $\beta_2$ -AR, so they are called nonselective  $\beta$ -blockers. Blocking of the  $\beta_1$ -AR in the heart is beneficial in both heart failure and myocardial ischemia [111], but blocking of the  $\beta_2$ - or  $\beta_3$ -AR is not beneficial because it antagonizes  $\beta_2$ -AR-mediated bronchodilation and the mechanisms of cardiac protection and vasodilation mediated by both the  $\beta_2$ - and  $\beta_3$ -AR [28, 112]. In blood vessels,  $\beta_2$ - and  $\beta_3$ -ARs are present in vascular smooth muscle cells and endothelial cells and promote vasodilation through the eNOS-NO-cGMP-protein kinase G pathway. The first generation  $\beta$ -blockers may cause fatal side effects such as bronchospasm due to the antagonism of the  $\beta_2$ -AR. Therefore, the use of these blockers is strictly prohibited in patients with asthma. A recent experimental study has suggested that propranolol may be useful in the treatment of congenital heart disease by promoting cardiomyocyte cytokinesis in neonates and could, therefore, increase the number of cardiomyocytes and confer benefit after myocardial infarction in adulthood [113].

In order to find drugs that avoid the bronchial side effects of the first generation  $\beta$ -blockers, the second generation  $\beta$ -blockers have been developed. The most representative drugs are atenolol and metoprolol [114, 115]. Their affinities for the  $\beta_1$  subtype are higher than those for the  $\beta_2$  and  $\beta_3$  subtypes. At low doses, they inhibit  $\beta_1$ -AR-mediated effects in the heart, but not  $\beta_2$ -AR-mediated vasodilation or bronchodilation. At higher doses, the selectivity to the  $\beta_1$ -AR is lost. Therefore, the use of the second generation  $\beta$ -blockers should still be considered with caution in patients with respiratory diseases.

In addition to its effects on cardiomyocytes, new research has shown that metoprolol also acts on the hematopoietic system. Metoprolol reduced neutrophil infiltration by blocking the  $\beta_1$ -ARs on neutrophils. In the absence of neutrophils, metoprolol lost its protective effect on acute myocardial infarction, indicating that neutrophils are one of the targets of metoprolol in the treatment of acute myocardial infarction [116]. Other studies have shown that the functional improvement of metoprolol after myocardial infarction is dependent on the  $\beta_3$ -AR [117]. Therefore, patients with  $\beta_3$ -AR dysfunction may be insensitive to metoprolol. In addition, the treatment benefit of metoprolol is not correlated with a change in CaMKII activity in experimental and human heart failure [118]. Therefore, direct inhibition of CaMKII on top of  $\beta_1$ -AR blockade might bring additional benefit to heart failure therapy.

The third generation  $\beta$ -blockers are drugs with vasodilating properties. This vasodilating activity is beneficial because it reduces peripheral vascular resistance and lowers blood pressure while maintaining or improving cardiac output and left ventricular function. Carvedilol and labetalol produce their vasodilating effects by antagonizing the  $\alpha_1$ -AR in vascular smooth muscle cells. Nebivolol produces NO-mediated vasodilation by means of activating the  $\beta_2$ - and/or  $\beta_3$ -ARs in endothelial cells [119]. Vasodilating  $\beta$ -blockers also have neutral (labetalol and nebivolol) or beneficial (carvedilol) effects on glucose and lipid metabolism, whereas non-vasodilating  $\beta$ -blockers tend to have negative effects on glucose and lipid metabolism [120].

Carvedilol has the most evidence for reducing morbidity and mortality in patients with ischemic heart failure [110]. Its effectiveness might be due to its unique biological activity. Carvedilol possesses an antioxidant activity, and could prevent cardiomyocyte apoptosis induced by doxorubicin and the reduction of  $\beta_1$ -AR expression induced by hydrogen peroxide or doxorubicin [121]. One possible mechanism is that carvedilol contains a large aromatic amine substituent that is not present in other  $\beta$ -blockers. This large group forms a unique contact with the  $\beta_1$ -AR ligand binding pocket, causing a conformational rearrangement on the extracellular surface, thus burying the redox-sensitive disulfide bond in the receptor structure. Another possible explanation for its beneficial effect on heart failure is that carvedilol promotes the accumulation of N-terminal truncated  $\beta_1$ -ARs, which constitutively (without ligand induction) activate non-classical  $G_i$  protein-mediated Akt signaling in carvedilol-treated cardiomyocytes [121]. Unlike the classical  $\beta_1$ -AR-coupled  $G_s$  protein-mediated signal transduction pathway, this study and some others suggest that carvedilol promotes the recruitment of  $G_i$  proteins to the  $\beta_1$ -AR (but not  $\beta_2$ -AR) and initiates unique signal transduction

[80,122]. Carvedilol also reversed the deterioration of cardiac function in diabetes which seems to be related to  $\beta$ -arrestins [123].

Specific blocking of the  $\beta_1$ -AR in Golgi bodies of cardiomyocytes has recently been found to prevent cardiac hypertrophy [124], which has a potential to be developed into new-generation  $\beta$ -blockers.

$\beta$ -Blockers differ a lot in their pharmacological properties, for instance receptor subtype specificity, intrinsic sympathomimetic activity, membrane-stabilizing activity, lipophilicity, side effects and effectiveness in treating heart failure. Thus, they need to be studied individually rather than by category [125].

### 3.2. Other Potential $\beta$ -AR-related Therapies

Recent evidence has shown that  $\beta_2$ -AR agonists may be potentially useful in cardiovascular diseases [126,127]. Moreover,  $\beta_2$ -AR agonists with high specificity and activities have been designed and synthesized continuously [128,129]. Biased ligands and positive or negative allosteric modulators for  $\beta$ -ARs have also been designed and reported [130 – 136]. In addition, some researchers have activated  $\beta_2$ -AR-mediated  $\beta$ -arrestin-biased signaling by expressing allosteric regulatory peptides without the participation of agonists, and have confirmed the protective effect of this signal on cardiomyocytes [137]. It should be noted that long-term use of  $\beta_2$ -AR agonists has been shown to increase the risk of heart failure in some meta-analysis although the overall cardiovascular safety of  $\beta_2$ -AR agonists has been confirmed in many studies [138]. Whether  $\beta_2$ -AR ligands should be used alone or in combination with other drugs such as  $\beta_1$ -AR blockers in treating cardiovascular disease requires more clinical validation.

In addition, gold nanoparticles, a widely used drug transport carrier, have a property to accumulate in the heart through blood circulation, and have been found to play an anti-myocardial hypertrophy role by downregulating the  $\beta_1$ -AR and its downstream ERK pathway [139]. Thus, gold nanoparticles may be a potential multifunctional material for drug transport and anti-myocardial hypertrophy therapy. One possibility is to use gold nanoparticles to deliver small molecule inhibitors, microRNAs or gene therapy to combat the deleterious effect of GRKs in heart diseases [61]. Other new development includes light-controlled drugs with a high level of  $\beta_1$ -/ $\beta_2$ -AR selectivity [140]. Given the presence of multiple phosphorylation sites on GPCRs that are associated with distinct signal transduction pathways, mechanisms that generate different receptor phosphorylation patterns may be exploited for the development of pathway-selective drugs.

## 4. Future Prospects

Cardiovascular disease is a leading public health problem worldwide. In particular, heart failure is one of the most common complications of cardiovascular disease and an important cause of hospitalization and immature death. There is a large and growing demand of better and more personalized cardiovascular drugs.  $\beta$ -AR signal transduction plays an important role in cardiac physiology and the pathophysiology of heart failure, and it is also a therapeutic target with a long history. Technological advances, especially functional genomics and structure-based drug discovery, have enabled the continual discovery of existing and novel GPCR targets (i.e. orphan receptors) and GPCR-targeting drugs. Especially, emerging studies have suggested that biased GPCR signaling may be exploited as new therapeutic targets. Recently, the structural biology approach has begun to illuminate the structural basis of GPCR activation by different ligands or allosteric modulators, and hold promise for elucidating the structure-function relationships of GPCR signal complexes. It is anticipated that new drugs based on these structural understandings will be developed in the near future. Therefore, new disease models and transgenic systems need to be created along the way to promote basic research on cardiovascular science and drug development.

**Author Contributions:** All authors discussed the materials and the content of the manuscript. Y.S, A.Y.H.W and Y.Z wrote the manuscript text. Y.S and A.Y.H.W prepared the figure. All authors reviewed and edited the manuscript.

**Funding:** This work was financially supported by Beijing Municipal Natural Science Foundation (7224348), National Key R&D Program of China (2018YFA0800501) and the National Natural Science Foundation of China (92168114).

**Conflicts of Interest:** The authors declare no conflict of interest.

## References

1. Kenakin T. Biased receptor signaling in drug discovery. *Pharmacol.Rev.*, **2019**, 71(2): 267-315.



2. Song Y.; Xu C. J.; Liu J. F.; et al. Heterodimerization with 5-HT<sub>2</sub>BR is indispensable for  $\beta$ 2AR-Mediated cardioprotection. *Circ.Res.*, **2021**, *128*(2): 262-277.
3. Wnorowski A.; Jozwiak K. Homo- and hetero-oligomerization of  $\beta$ 2-adrenergic receptor in receptor trafficking, signaling pathways and receptor pharmacology. *Cell.Signalling*, **2014**, *26*(10): 2259-2265.
4. Alexander S.; Christopoulos A.; Davenport P.P.; et al. THE CONCISE GUIDE TO PHARMACOLOGY 2019/20:G protein-coupled receptors, *Br. J.Pharmacol.*, **2019**, *176*(Suppl 1): S21-S141.
5. Grisanti A. A.; Schumacher M. M.; Tilley G. G.; et al. Designer approaches for G Protein-Coupled receptor modulation for cardiovascular disease. *JACC Basic Transl. Sci.*, **2018**, *3*(4): 550-562.
6. Laschet C.; Dupuis N.; Hanson J. The G protein-coupled receptors deorphanization landscape. *Biochem.Pharmacol.*, **2018**, *153*: 62-74.
7. Mouat A.A.; Coleman L.J.L.J.; Smith J.J. GPCRs in context: sexual dimorphism in the cardiovascular system. *Br. J. Pharmacol.*, **2018**, *175*(21): 4047-4059.
8. Virani S. S.; Alonso A.; Benjamin J.J.; et al. Heart disease and stroke statistics-2020 update: a report from the american heart association. *Circulation*, **2020**, *141*(9): e139-e596.
9. Li P.; Fu Y.X.; Ru J.L.; et al. Insights from systems pharmacology into cardiovascular drug discovery and therapy. *BMC Syst. Biol.*, **2014**, *8*: 141.
10. Huang B.S.; Chen A.; Ahmad M.; et al. Mineralocorticoid and AT<sub>1</sub> receptors in the paraventricular nucleus contribute to sympathetic hyperactivity and cardiac dysfunction in rats post myocardial infarct. *J. Physiol.*, **2014**, *592*(15): 3273-3286.
11. Wang J.L.; Hanada K.J.; Gareri C.; et al. Mechanoactivation of the angiotensin II type 1 receptor induces  $\beta$ -arrestin-biased signaling through G $\alpha$ i coupling. *J. Cell.Biochem.*, **2018**, *119*(4): 3586-3597.
12. Woo A.Y.H.; Komuro I.; Xiao R.P. Biased agonism at the angiotensin receptor: blocker and Calcium sensitizer at the same time. *Circulation*, **2017**, *135*(11): 1071-1074.
13. Ryba M. M.; Li J. L.; Cowan L. L.; et al. Long-Term biased  $\beta$ -Arrestin signaling improves cardiac structure and function in dilated cardiomyopathy. *Circulation*, **2017**, *135*(11): 1056-1070.
14. Michel M.C.; Harding S.E.; Bond R.A. Are there functional  $\beta_3$ -adrenoceptors in the human heart?. *Br. J.Pharmacol.*, **2011**, *162*(4): 817-822.
15. Zhou P.Z.; Pu T.T. Recounting cardiac cellular composition. *Circ.Res.*, **2016**, *118*(3): 368-370.
16. Myagmar B.E.; Flynn J.M.; Cowley P.M.; et al. Adrenergic receptors in individual ventricular myocytes: the beta-1 and alpha-1B are in all cells, the alpha-1a is in a subpopulation, and the beta-2 and beta-3 are mostly absent. *Circ. Res.*, **2017**, *120*(7): 1103-1115.
17. Lindenfeld J.; Cleveland J.C.Jr.; Kao D.P.; et al. Sex-related differences in age-associated downregulation of human ventricular myocardial  $\beta$ 1-adrenergic receptors. *J. Heart Lung Transplant.*, **2016**, *35*(3): 352-361.
18. Pecha S.; Geelhoed B.; Kempe R.; et al. No impact of sex and age on beta-adrenoceptor-mediated inotropy in human right atrial trabeculae. *Acta physiol.*, **2021**, *231*(3): e13564.
19. Bers M.M. Sarcoplasmic reticulum Ca release in intact ventricular myocytes. *Front. Biosci.*, **2002**, *7*: d1697-d1711.
20. Zhang Y.; Wang E.E.; Zhang X.Y.; et al. Cardiomyocyte PKA ablation enhances basal contractility while eliminates cardiac  $\beta$ -Adrenergic response without adverse effects on the heart. *Circ. Res.*, **2019**, *124*(12): 1760-1777.
21. Mi X.Y.; Ding W.G.; Toyoda F.; et al. Selective activation of adrenoceptors potentiates I<sub>Ks</sub> current in pulmonary vein cardiomyocytes through the protein kinase A and C signaling pathways. *J. Mol. Cell.Cardiol.*, **2021**, *161*: 86-97.
22. Xing G.; Woo Y.H.Y.H.; Pan L.; et al. Recent advances in  $\beta$ 2-Agonists for treatment of chronic respiratory diseases and heart failure. *J.Med. Chem.*, **2020**, *63*(24): 15218-15242.
23. Daaka Y.; Luttrell M.M.; Lefkowitz J.J. Switching of the coupling of the beta2-adrenergic receptor to different G proteins by protein kinase A. *Nature*, **1997**, *390*(6655): 88-91.
24. Xiao R.P.; Ji X.; Lakatta E.G. Functional coupling of the beta 2-adrenoceptor to a pertussis toxin-sensitive G protein in cardiac myocytes. *Mol.Pharmacol.*, **1995**, *47*(2): 322-329.
25. Arioglu-Inan E.; Kayki-Mutlu G.; Michel M.C. Cardiac  $\beta_3$ -adrenoceptors-A role in human pathophysiology?. *Br. J. Pharmacol.*, **2019**, *176*(14): 2482-2495.
26. Ali D.C.; Naveed M.; Gordon A.; et al.  $\beta$ -Adrenergic receptor, an essential target in cardiovascular diseases. *Heart Fail Rev.*, **2020**, *25*(2): 343-354.
27. Xu B.; Li M.H.; Wang Y.; et al. GRK5 controls SAP97-Dependent cardiotoxic  $\beta$ 1 adrenergic Receptor-CaMKII signaling in heart failure. *Circ.Res.*, **2020**, *127*(6): 796-810.
28. Huang J.; Li C.Z.; Song Y.; et al. ADRB2 polymorphism Arg16Gly modifies the natural outcome of heart failure and dictates therapeutic response to beta-blockers in patients with heart failure. *Cell Discov.*, **2018**, *4*: 57.
29. Shin E.; KoK.S.; Rhee B.D.; et al. Different effects of prolonged  $\beta$ -adrenergic stimulation on heart and cerebral artery. *Integr. Med. Res.*, **2014**, *3*(4): 204-210.
30. Imaeda A.; Tanaka S.; Tonegawa K.; et al. Myofibroblast  $\beta$ 2 adrenergic signaling amplifies cardiac hypertrophy in mice. *Biochem.Biophys. Res. Commun.*, **2019**, *510*(1): 149-155.
31. Tanaka S.; Imaeda A.; Matsumoto K.; et al.  $\beta$ 2-adrenergic stimulation induces interleukin-6 by increasing arid5a, a stabilizer of mRNA, through cAMP/PKA/CREB pathway in cardiac fibroblasts. *Pharmacol. Rese. Perspect.*, **2020**, *8*(2): e00590.
32. Bageghni S. A.; Hemmings K. E.; Zava N.; et al. Cardiac fibroblast-specific p38 $\alpha$  MAP kinase promotes cardiac hypertrophy via a putative paracrine interleukin-6 signaling mechanism. *FASEB J.*, **2018**, *32*(9): 4941-4954.
33. Nuamnaichati N.; Sato V.H.; Moongkarndi P.; et al. Sustained  $\beta$ -AR stimulation induces synthesis and secretion of

- growth factors in cardiac myocytes that affect on cardiac fibroblast activation. *Life Sci.*, **2018**, *193*: 257-269.
34. She G.; Hou M. C.; Zhang Y.; et al. Gal-3 (Galectin-3) and KCa3.1 Mediate Heterogeneous Cell Coupling and Myocardial Fibrogenesis Driven by betaAR (beta-Adrenoceptor) Activation. *Hypertension*, **2020**, *75*(2): 393-404.
  35. Khadeja Bi A.; Santhosh V.; Sigamani K. Levels of galectin-3 in chronic heart failure: a Case-Control study. *Cureus*, **2022**, *14*(8): e28310.
  36. Al-Salam S.; Hashmi S.; Jagadeesh G.S.; et al. Galectin-3: a cardiomyocyte antiapoptotic mediator at 24-Hour post myocardial infarction. *Cell. Physiol. Biochem.*, **2020**, *54*(2): 287-302.
  37. Zhao W.B.; Lu Q.; Nguyen N.N.; et al. Stimulation of  $\beta$ -adrenoceptors up-regulates cardiac expression of galectin-3 and BIM through the Hippo signalling pathway. *Br. J. Pharmacol.*, **2019**, *176*(14): 2465-2481.
  38. Aránguiz-Urroz P.; Canales J.; Copaja M.; et al. Beta(2)-adrenergic receptor regulates cardiac fibroblast autophagy and collagen degradation. *Biochim.Biophys.Acta*, **2011**, *1812*(1): 23-31.
  39. Bristow M.R.; Hershberger R.E.; Port J.D.; et al. Beta 1- and beta 2-adrenergic receptor-mediated adenylate cyclase stimulation in nonfailing and failing human ventricular myocardium. *Mol. Pharmacol.*, **1989**, *35*(3): 295-303.
  40. Bristow M.R.; Minobe W.A.; Raynolds M.V.; et al. Reduced beta 1 receptor messenger RNA abundance in the failing human heart. *J. Clin. Invest.*, **1993**, *92*(6): 2737-2745.
  41. Lympopoulos A.; Rengo G.; Koch W.J. Adrenergic nervous system in heart failure: pathophysiology and therapy. *Circ. Res.*, **2013**, *113*(6): 739-753.
  42. de Lucia C.; Eguchi A.; Koch W.J. New insights in cardiac beta-Adrenergic signaling during heart failure and aging. *Front. Pharmacol.*, **2018**, *9*: 904.
  43. Effect of metoprolol CR/XL in chronic heart failure: Metoprolol CR/XL Randomised Intervention Trial in Congestive Heart Failure (MERIT-HF). *Lancet*, **1999**, *353*(9169): 2001-2007.
  44. Sigmund M.; Jakob H.; Becker H.; et al. Effects of metoprolol on myocardial beta-adrenoceptors and Gi alpha-proteins in patients with congestive heart failure. *Eur. J. Clin. Pharmacol.*, **1996**, *51*(2): 127-132.
  45. Kukin M.L.; Kalman J.; Charney R.H.; et al. Prospective, randomized comparison of effect of long-term treatment with metoprolol or carvedilol on symptoms, exercise, ejection fraction, and oxidative stress in heart failure. *Circulation*, **1999**, *99*(20): 2645-2651.
  46. Ungerer M.; Böhm M.; Elce J.S.; et al. Altered expression of beta-adrenergic receptor kinase and beta 1-adrenergic receptors in the failing human heart. *Circulation*, **1993**, *87*(2): 454-463.
  47. Nguyen N. N.; Kiriazis H.; Ruggiero D.; et al. Spontaneous ventricular tachyarrhythmias in  $\beta$ 2-adrenoceptor transgenic mice in relation to cardiac interstitial fibrosis. *Am. J. Physiol.*, **2015**, *309*(5): H946-H957.
  48. Dorn G. W. 2nd.; Tepe N.M.; Lorenz J. N.; et al. Low- and high-level transgenic expression of beta2-adrenergic receptors differentially affect cardiac hypertrophy and function in Galphaq-overexpressing mice. *Proc. Natl. Acad. Sci. U. S. A.*, **1999**, *96*(11): 6400-6405.
  49. Engelhardt S.; Hein L.; Wiesmann F.; et al. Progressive hypertrophy and heart failure in beta1-adrenergic receptor transgenic mice. *Proc. Natl. Acad. Sci. U. S. A.*, **1999**, *96*(12): 7059-7064.
  50. Liang W.; Austin S.; Hoang Q.; et al. Resistance of the human beta 1-adrenergic receptor to agonist-mediated down-regulation. *J. Biol. Chem.*, **2003**, *278*(41): 39773-39781.
  51. Shi Q.; Li M.H.; Mika D.; et al. Heterologous desensitization of cardiac  $\beta$ -adrenergic signal via hormone-induced  $\beta$ AR/arrestin/PDE4 complexes. *Cardiovasc. Res.*, **2017**, *113*(6): 656-670.
  52. Judina A.; Gorelik J.; Wright P.T. Studying signal compartmentation in adult cardiomyocytes. *Biochem. Soc. Trans.*, **2020**, *48*(1): 61-70.
  53. Steinberg S.F. Beta(2)-Adrenergic receptor signaling complexes in cardiomyocyte caveolae/lipid rafts. *J. Mol. Cell. Cardiol.*, **2004**, *37*(2): 407-415.
  54. Xiang Y.K. Compartmentalization of beta-adrenergic signals in cardiomyocytes. *Circ. Res.*, **2011**, *109*(2): 231-244.
  55. Xiao R.P.; Cheng H.; Zhou Y.Y.; et al. Recent advances in cardiac beta(2)-adrenergic signal transduction. *Circ. Res.*, **1999**, *85*(11): 1092-1100.
  56. Yang H.Q.; Wang L.P.; Gong Y.Y.; et al.  $\beta$ 2-Adrenergic stimulation compartmentalizes  $\beta$ 1 signaling into nanoscale local domains by targeting the C-Terminus of  $\beta$ 1-Adrenoceptors. *Circ. Res.*, **2019**, *124*(9): 1350-1359.
  57. Davare M.A.; Avdonin V.; Hall D.D.; et al. A beta2 adrenergic receptor signaling complex assembled with the Ca<sup>2+</sup> channel Cav1.2. *Science*, **2001**, *293*(5527): 98-101.
  58. Zhou Y. Y.; Cheng H.; Bogdanov K. Y.; et al. Localized cAMP-dependent signaling mediates beta 2-adrenergic modulation of cardiac excitation-contraction coupling. *Am. J. Physiol.*, **1997**, *273*(3 Pt 2): H1611-H1618.
  59. Sanchez-Alonso J.L.; Bhargava A.; O'Hara T.; et al. Microdomain-specific modulation of L-Type calcium channels leads to triggered ventricular arrhythmia in heart failure. *Circ. Res.*, **2016**, *119*(8): 944-955.
  60. Loucks A.D.; O'Hara T.; Trayanova N.A. Degradation of t-tubular microdomains and altered cAMP compartmentation lead to emergence of arrhythmogenic triggers in heart failure myocytes: an *in silico* study. *Front. Physiol.*, **2018**, *9*: 1737.
  61. Hullmann J.; Traynham C.J.; Coleman R.C.; et al. The expanding GRK interactome: Implications in cardiovascular disease and potential for therapeutic development. *Pharmacol. Res.*, **2016**, *110*: 52-64.
  62. Nobles K.N.; Xiao K.H.; Ahn S.; et al. Distinct phosphorylation sites on the  $\beta$ (2)-adrenergic receptor establish a barcode that encodes differential functions of  $\beta$ -arrestin. *Sci. Signaling*, **2011**, *4*(185): ra51.
  63. Eckhart A.D.; Duncan S.J.; Penn D.B.; et al. Hybrid transgenic mice reveal *in vivo* specificity of G protein-coupled receptor kinases in the heart. *Circ. Res.*, **2000**, *86*(1): 43-50.
  64. Zhu W.Z.; Petrashevskaya N.; Ren S.X.; et al. G<sub>i</sub>-Biased  $\beta$ <sub>2</sub>AR Signaling Links GRK2 Upregulation to Heart Failure.

- Circ. Res.*, **2012**, *110*(2): 265-274.
65. Schlegel P.; Reinkober J.; Meinhardt E.; et al. G protein-coupled receptor kinase 2 promotes cardiac hypertrophy. *PLoS one*, **2017**, *12*(7): e0182110.
  66. Travers J. G.; Kamal F. A.; Valiente-Alandi I.; et al. Activated Fibroblast Targeting of Gbetagamma-GRK2 After Myocardial Ischemia Attenuates Heart Failure Progression. *J. Am. Coll. Cardiol.*, **2017**, *70*(8): 958-971.
  67. Woodall M. C.; Woodall B. P.; Gao E. H.; et al. Cardiac fibroblast GRK2 deletion enhances contractility and remodeling following ischemia/reperfusion injury. *Circ. Res.*, **2016**, *119*(10): 1116-1127.
  68. AbdAlla J.; Graemer M.; Fu X. B.; et al. Inhibition of G-protein-coupled Receptor Kinase 2 Prevents the Dysfunction of Cardiac Substrate Metabolism in Fatty Acid Synthase Transgenic Mice. *J. Biol. Chem.*, **2016**, *291*(6): 2583-2600.
  69. Cannavo A.; Marzano F.; Elia A.; et al. Aldosterone jeopardizes myocardial insulin and beta-Adrenergic receptor signaling via G Protein-Coupled receptor kinase 2. *Front. Pharmacol.*, **2019**, *10*: 888.
  70. Powell J. M.; Ebin E.; Borzak S.; et al. Hypothesis: paroxetine, a G Protein-Coupled receptor kinase 2 (GRK2) inhibitor reduces morbidity and mortality in patients with heart failure. *J. Cardiovasc. Pharmacol. Ther.*, **2017**, *22*(1): 51-53.
  71. Santulli G.; Campanile A.; Spinelli L.; et al. G protein-coupled receptor kinase 2 in patients with acute myocardial infarction. *Am. J. Cardiol.*, **2011**, *107*(8): 1125-1130.
  72. Ma X. Y.; Hu Y. F.; Batebi H.; et al. Analysis of  $\beta$ 2AR-Gs and  $\beta$ 2AR-Gi complex formation by NMR spectroscopy. *Proc. Natl. Acad. Sci. U. S. A.*, **2020**, *117*(37): 23096-23105.
  73. Alegre K. O.; Paknejad N.; Su M. F.; et al. Structural basis and mechanism of activation of two different families of G proteins by the same GPCR. *Nat. Struct. Mol. Biol.*, **2021**, *28*(11): 936-944.
  74. Nakano T.; Onoue K. J.; Nakada Y.; et al. Alteration of  $\beta$ -Adrenoceptor signaling in left ventricle of acute phase takotsubo syndrome: a human study. *Sci. Rep.*, **2018**, *8*(1): 12731.
  75. Woo A. Y.; Song Y.; Xiao R. P.; et al. Biased  $\beta$ 2-adrenoceptor signalling in heart failure: pathophysiology and drug discovery. *Br. J. Pharmacol.*, **2015**, *172*(23): 5444-5456.
  76. Martini J. S.; Raake P.; Vinge L. E.; et al. Uncovering G protein-coupled receptor kinase-5 as a histone deacetylase kinase in the nucleus of cardiomyocytes. *Proc. Natl. Acad. Sci. U. S. A.*, **2008**, *105*(34): 12457-12462.
  77. Gold J. I.; Gao E. H.; Shang X. Y.; et al. Determining the absolute requirement of G protein-coupled receptor kinase 5 for pathological cardiac hypertrophy: short communication. *Circ. Res.*, **2012**, *111*(8): 1048-1053.
  78. Liggett S. B.; Cresci S.; Kelly R. J.; et al. A GRK5 polymorphism that inhibits beta-adrenergic receptor signaling is protective in heart failure. *Nat. Med.*, **2008**, *14*(5): 510-517.
  79. Nakaya M. C.; Chikura S.; Watari K. J.; et al. Induction of cardiac fibrosis by  $\beta$ -blocker in G protein-independent and G protein-coupled receptor kinase 5/ $\beta$ -arrestin2-dependent signaling pathways. *J. Bio. Chem.*, **2012**, *287*(42): 35669-35677.
  80. Teoh J. P.; Bayoumi A. S.; Aonuma T.; et al.  $\beta$ -arrestin-biased agonism of  $\beta$ -adrenergic receptor regulates dicer-mediated microRNA maturation to promote cardioprotective signaling. *J. Mol. Cell. Cardiol.*, **2018**, *118*: 225-236.
  81. Colomer J. M.; Mao L.; Rockman H. A.; et al. Pressure overload selectively up-regulates Ca<sup>2+</sup>/calmodulin-dependent protein kinase II *in vivo*. *Mol. Endocrinol.*, **2003**, *17*(2): 183-192.
  82. Grimm M.; Ling H. Y.; Willeford A.; et al. CaMKII $\delta$  mediates  $\beta$ -adrenergic effects on RyR2 phosphorylation and SR Ca(2+) leak and the pathophysiological response to chronic  $\beta$ -adrenergic stimulation. *J. Mol. Cell. Cardiol.*, **2015**, *85*: 282-291.
  83. Xu L.; Lai D. W.; Cheng J.; et al. Alterations of L-type Calcium current and cardiac function in CaMKII $\delta$  knockout mice. *Circ. Res.*, **2010**, *107*(3): 398-407.
  84. Wang W.; Zhu W. Z.; Wang S. Q.; et al. Sustained beta1-adrenergic stimulation modulates cardiac contractility by Ca<sup>2+</sup>/calmodulin kinase signaling pathway. *Circ. Res.*, **2004**, *95*(8): 798-806.
  85. Mika D.; Richter W.; Conti M. A CaMKII/PDE4D negative feedback regulates cAMP signaling. *Proc. Natl. Acad. Sci. U. S. A.*, **2015**, *112*(7): 2023-2028.
  86. Zhu W. Z.; Wang S. Q.; Chakir K.; et al. Linkage of beta1-adrenergic stimulation to apoptotic heart cell death through protein kinase A-independent activation of Ca<sup>2+</sup>/calmodulin kinase II. *J. Clin. Invest.*, **2003**, *111*(5): 617-625.
  87. Yang Y. B.; Zhu W. Z.; Joiner M. L.; et al. Calmodulin kinase II inhibition protects against myocardial cell apoptosis *in vivo*. *Am. J. Physiol.*, **2006**, *291*(6): H3065-H3075.
  88. Sucharov C. C.; Mariner P. D.; Nunley K. R.; et al. A beta1-adrenergic receptor CaM kinase II-dependent pathway mediates cardiac myocyte fetal gene induction. *Am. J. Physiol.*, **2006**, *291*(3): H1299-H1308.
  89. Dybkova N.; Sedej S.; Napolitano C.; et al. Overexpression of CaMKII $\delta$  in RyR2R4496C<sup>+</sup>/ knock-in mice leads to altered intracellular Ca<sup>2+</sup> handling and increased mortality. *J. Am. Coll. Cardiol.*, **2011**, *57*(4): 469-479.
  90. Sadredini M.; Haugsten Hansen M.; Frisk M.; et al. CaMKII inhibition has dual effects on spontaneous Ca<sup>2+</sup> release and Ca<sup>2+</sup> alternans in ventricular cardiomyocytes from mice with a gain-of-function RyR2 mutation. *Am. J. Physiol.*, **2021**, *321*(2): H446-H460.
  91. Curran J.; Hinton M. J.; Ríos E.; et al. Beta-adrenergic enhancement of sarcoplasmic reticulum Calcium leak in cardiac myocytes is mediated by Calcium/calmodulin-dependent protein kinase. *Circ. Res.*, **2007**, *100*(3): 391-398.
  92. Bos J. L. Epac proteins: multi-purpose cAMP targets. *Trends Biochem. Sci.*, **2006**, *31*(12): 680-686.
  93. Ponsioen B.; Gloerich M.; Ritsma L.; et al. Direct spatial control of Epac1 by cyclic AMP. *Mol. Cell. Biol.*, **2009**, *29*(10): 2521-2531.
  94. Mangmool S.; Shukla A. K.; Rockman H. A. beta-Arrestin-dependent activation of Ca(2+)/calmodulin kinase II after

- beta(1)-adrenergic receptor stimulation. *J. Cell Biol.*, **2010**, *189*(3): 573-587.
95. Curran J.; Tang L.F.; Roof S.R.; et al. Nitric oxide-dependent activation of CaMKII increases diastolic sarcoplasmic reticulum Calcium release in cardiac myocytes in response to adrenergic stimulation. *PLoS one*, **2014**, *9*(2): e87495.
  96. Pereira L.; Bare D.J.; Galice S.; et al.  $\beta$ -Adrenergic induced SR Ca<sup>2+</sup> leak is mediated by an Epac-NOS pathway. *J. Mol. Cell. Cardiol.*, **2017**, *108*: 8-16.
  97. Zhang X.Y.; Szeto C.; Gao E.; et al. Cardiotoxic and cardioprotective features of chronic  $\beta$ -adrenergic signaling. *Circ. Res.*, **2013**, *112*(3): 498-509.
  98. Beauverger P.; Ozoux M.L.; Bégis G.; et al. Reversion of cardiac dysfunction by a novel orally available Calcium/calmodulin-dependent protein kinase II inhibitor, RA306, in a genetic model of dilated cardiomyopathy. *Cardiovasc. Res.*, **2020**, *116*(2): 329-338.
  99. Mustroph J.; Wagemann O.; Lücht C.M.; et al. Empagliflozin reduces Ca/calmodulin-dependent kinase II activity in isolated ventricular cardiomyocytes. *ESC Heart Failure*, **2018**, *5*(4): 642-648.
  100. Chen J.J.; Xu S.N.; Zhou W.; et al. Exendin-4 reduces ventricular arrhythmia activity and Calcium Sparks-Mediated sarcoplasmic reticulum Ca leak in rats with heart failure. *Int. Heart J.*, **2020**, *61*(1): 145-152.
  101. Puhl S.L.; Weeks K.L.; Güran A.; et al. Role of type 2A phosphatase regulatory subunit B56 $\alpha$  in regulating cardiac responses to  $\beta$ -adrenergic stimulation *in vivo*. *Cardiovasc. Res.*, **2019**, *115*(3): 519-529.
  102. Schmid E.; Neef S.; Berlin C.; et al. Cardiac RKIP induces a beneficial  $\beta$ -adrenoceptor-dependent positive inotropy. *Nat. Med.*, **2015**, *21*(11): 1298-1306.
  103. Zhang W.J.; Qu X.X.; Chen B.Y.; et al. Critical roles of STAT3 in  $\beta$ -Adrenergic functions in the heart. *Circulation*, **2016**, *133*(1): 48-61.
  104. Zhu W.Z.; Tsang S.; Browe D.M.; et al. Interaction of  $\beta$ 1-adrenoceptor with RAGE mediates cardiomyopathy via CaMKII signaling. *JCI Insight*, **2016**, *1*(1): e84969.
  105. Whitcomb V.; Wauson E.; Christian D.; et al. Regulation of beta adrenoceptor-mediated myocardial contraction and Calcium dynamics by the G protein-coupled estrogen receptor 1. *Biochem. Pharm.*, **2020**, *171*: 113727.
  106. Castaldi A.; Zaglia T.; Di Mauro V.; et al. MicroRNA-133 modulates the  $\beta$ 1-adrenergic receptor transduction cascade. *Circ. Res.*, **2014**, *115*(2): 273-283.
  107. Liu Z.B.; Tao B.; Fan S.Z.; et al. Over-expression of microRNA-145 drives alterations in  $\beta$ -adrenergic signaling and attenuates cardiac remodeling in heart failure post myocardial infarction. *Aging*, **2020**, *12*(12): 11603-11622.
  108. Deng Y.F.; Wang J.; Xie G.J.; et al. Circ-HIPK3 strengthens the effects of adrenaline in heart failure by MiR-17-3p - ADCY6 axis. *Int. J. Biol. Sci.*, **2019**, *15*(11): 2484-2496.
  109. Johnson J.A.; Liggett S.B. Cardiovascular pharmacogenomics of adrenergic receptor signaling: clinical implications and future directions. *Clin. Pharmacol. Ther.*, **2011**, *89*(3): 366-378.
  110. DiNicolantonio J.J.; Fares H.; Niazi A.K.; et al.  $\beta$ -Blockers in hypertension, diabetes, heart failure and acute myocardial infarction: a review of the literature. *Open Heart*, **2015**, *2*(1): e000230.
  111. Poirier L.; Tobe S.W. Contemporary use of  $\beta$ -blockers: clinical relevance of subclassification. *Canadi. J. Cardio.*, **2014**, *30*(5 Suppl): S9-S15.
  112. Moens A.L.; Leyton-Mange J.S.; Niu X.L.; et al. Adverse ventricular remodeling and exacerbated NOS uncoupling from pressure-overload in mice lacking the beta3-adrenoceptor. *J. Mol. Cell. Cardiol.*, **2009**, *47*(5): 576-585.
  113. Liu H.H.; Zhang C.H.; Ammanamanchi N.; et al. Control of cytokinesis by  $\beta$ -adrenergic receptors indicates an approach for regulating cardiomyocyte endowment. *Sci. Transl. Med.*, **2019**, *11*(513): eaaw6419.
  114. Frishman W. H. Fifty years of beta-adrenergic blockade: a golden era in clinical medicine and molecular pharmacology. *Am. J. Med.*, **2008**, *121*(11): 933-934.
  115. do Vale G.T.; Ceron C.S.; Gonzaga N.A.; et al. Three generations of  $\beta$ -blockers: history, class differences and clinical applicability. *Curr. Hypertens. Rev.*, **2019**, *15*(1): 22-31.
  116. García-Prieto J.; Villena-Gutiérrez R.; Gómez M.; et al. Neutrophil stunning by metoprolol reduces infarct size. *Nat. Commun.*, **2017**, *8*: 14780.
  117. Cannavo A.; Rengo G.; Liccardo D.; et al.  $\beta$ 1-Blockade prevents Post-Ischemic myocardial decompensation via  $\beta$  3AR-Dependent protective sphingosine-1 phosphate signaling. *J. Am. Coll. Cardiol.*, **2017**, *70*(2): 182-192.
  118. Dewenter M.; Neef S.; Vettel C.; et al. Calcium/calmodulin-dependent protein kinase II activity persists during chronic  $\beta$ -adrenoceptor blockade in experimental and human heart failure. *Circ.: Heart Failure*, **2017**, *10*(5): e003840.
  119. Broeders M.A.; Doevendans P.A.; Bekkers B.C.; et al. Nebivolol: a third-generation beta-blocker that augments vascular nitric oxide release: endothelial beta(2)-adrenergic receptor-mediated nitric oxide production. *Circulation*, **2000**, *102*(6): 677-684.
  120. Fonseca V.A. Effects of beta-blockers on glucose and lipid metabolism. *Curr. Med. Res. Opin.*, **2010**, *26*(3): 615-629.
  121. Park M.; Steinberg S.F. Carvedilol prevents redox inactivation of cardiomyocyte  $\beta$ 1-adrenergic receptors. *JACC. Basic Transl. Sci.*, **2018**, *3*(4): 521-532.
  122. Wang J.L.; Hanada K.J.; Staus D.P.; et al. Gai is required for carvedilol-induced  $\beta$ 1 adrenergic receptor  $\beta$ -arrestin biased signaling. *Nat. Commun.*, **2017**, *8*(1): 1706.
  123. Güven B.; Kara Z.; Onay-Beşikci A. Metabolic effects of carvedilol through  $\beta$ -arrestin proteins: investigations in a streptozotocin-induced diabetes rat model and in C2C12 myoblasts. *Br. J. Pharmacol.*, **2020**, *177*(24): 5580-5594.
  124. Nash C.A.; Wei W.H.; Irannejad R.; et al. Golgi localized  $\beta$ 1-adrenergic receptors stimulate Golgi PI4P hydrolysis by PLC $\epsilon$  to regulate cardiac hypertrophy. *Elife*, **2019**, *8*: e48167.
  125. Koracevic G.; Micic S.; Stojanovic M.; et al. Compelling indications should be listed for individual beta-blockers



- (due to diversity),not for the whole class. *Curr. Vasc. Pharmacol.*, **2021**, *19*(4): 343-346.
126. Germano N.; Summerfield D.; Johnson B. A mini review of inhaled beta 2 agonists in acute decompensated heart failure requiring respiratory support. *Pulm. Crit. Care. Med.*, **2019**, *4*(3): 10.15761/pccm.1000161.
  127. Reddy Y.N.V.; Obokata M.; Koepp K.E.; et al. The  $\beta$ -Adrenergic agonist albuterol improves pulmonary vascular reserve in heart failure with preserved ejection fraction. *Circ. Res.*, **2019**, *124*(2): 306-314.
  128. Ge X.A.; Woo A.Y.H.; Xing G.; et al. Synthesis and biological evaluation of  $\beta$ 2-adrenoceptor agonists bearing the 2-amino-2-phenylethanol scaffold. *Eur. J. Med. Chem.*, **2018**, *152*: 424-435.
  129. Ge X. Y.; Mo Y. M.; Xing G.; et al. Synthesis, biological evaluation and molecular modeling of 2-amino-2-phenylethanol derivatives as novel  $\beta$ 2-adrenoceptor agonists. *Bioorg. Chem.*, **2018**, *79*: 155-162.
  130. Ahn S.; Kahsai A.W.; Pani B.; et al. Allosteric “beta-blocker” isolated from a DNA-encoded small molecule library. *Proc. Natl. Acad. Sci. U. S. A.*, **2017**, *114*(7): 1708-1713.
  131. Liu X. Y.; Ahn S.; Kahsai A. W.; et al. Mechanism of intracellular allosteric  $\beta$ 2AR antagonist revealed by X-ray crystal structure. *Nature*, **2017**, *548*(7668): 480-484.
  132. Meng K. C.; Shim P.; Wang Q.; et al. Design, synthesis, and functional assessment of Cmpd-15 derivatives as negative allosteric modulators for the  $\beta$ 2-adrenergic receptor. *Bioorg. Med. Chem.*, **2018**, *26*(9): 2320-2330.
  133. Ahn S.; Pani B.; Kahsai A.W.; et al. Small-Molecule positive allosteric modulators of the  $\beta$ 2-Adrenoceptor isolated from DNA-Encoded libraries. *Mol. Pharmacol.*, **2018**, *94*(2): 850-861.
  134. Liu X. Y.; Masoudi A.; Kahsai A. W.; et al. Mechanism of  $\beta$ 2AR regulation by an intracellular positive allosteric modulator. *Science*, **2019**, *364*(6447): 1283-1287.
  135. Liu X.Y.; Kaindl J.; Korczynska M.; et al. An allosteric modulator binds to a conformational hub in the  $\beta$ 2 adrenergic receptor. *Nat. Chem. Biol.*, **2020**, *16*(7): 749-755.
  136. Woo A. Y. H.; Ge X. Y.; Pan L.; et al. Discovery of  $\beta$ -arrestin-biased  $\beta$ 2-adrenoceptor agonists from 2-amino-2-phenylethanol derivatives. *Acta Pharmacol. Sin.*, **2019**, *40*(8): 1095-1105.
  137. Carr R. 3rd.; Schilling J.; Song J.L.; et al.  $\beta$ -arrestin-biased signaling through the  $\beta$ 2-adrenergic receptor promotes cardiomyocyte contraction. *Proc. Natl. Acad. Sci. U. S. A.*, **2016**, *113*(28): E4107-E4116.
  138. Li C. X.; Cheng W. K.; Guo J.; et al. Relationship of inhaled long-acting bronchodilators with cardiovascular outcomes among patients with stable COPD: a meta-analysis and systematic review of 43 randomized trials. *Int. J. Chronic Obstruct. Pulm. Dis.*, **2019**, *14*: 799-808.
  139. Qiao Y.H.; Zhu B. L.; Tian A. J.; et al. PEG-coated Gold nanoparticles attenuate  $\beta$ -adrenergic receptor-mediated cardiac hypertrophy. *Int. J. Nanomed.*, **2017**, *12*: 4709-4719.
  140. Duran-Corbera A.; Faria M.; Ma Y.Y.; et al. A photoswitchable ligand targeting the  $\beta$ 1-Adrenoceptor enables Light-Control of the cardiac rhythm\*\*. *Angew. Chem., Int. Ed.*, **2022**, *61*(30): e202203449.

**Citation:** Song Y.; Woo A.; Zhang Y.; et al.(2022). Cardiac  $\beta$ -adrenoceptor signaling: the new insight on an old target in the therapy of cardiovascular disease. *International Journal of Drug Discovery and Pharmacology*, *1*(1),3. <https://doi.org/10.53941/ijddp.v1i1.177>.

**Publisher’s Note:** Scilight stays neutral with regard to jurisdictional claims in published maps and institutional affiliations.



**Copyright:** © 2022 by the authors. This is an open access article under the terms and conditions of the Creative Commons Attribution (CC BY) license (<https://creativecommons.org/licenses/by/4.0/>).