

Mandibular Periosteal Cells Exhibit *Trpv2*-Dependent Mechanosensitivity to Microscale Stiffness Patterns

Qianying Lin^{1,†}, Conghui Zhang^{1,†}, Kaijie Zhang², Siyu Jin¹, Longjian Xue^{2,*} and Wei Ji^{1,3,*}

¹ State Key Laboratory of Oral & Maxillofacial Reconstruction and Regeneration, Key Laboratory of Oral Biomedicine Ministry of Education, Hubei Key Laboratory of Stomatology, School & Hospital of Stomatology, Wuhan University, Wuhan 430079, China

² School of Power and Mechanical Engineering, The Institute of Technological Science, Wuhan University, South Donghu Road 8, Wuhan 430072, China

³ Department of Oral Implantology, School and Hospital of Stomatology, Wuhan University, Luoyu Road 237, Wuhan 430079, China

* Correspondence: xuelongjian@whu.edu.cn (L.X.); wei.ji@whu.edu.cn (W.J.)

† These authors contributed equally to this work.

How To Cite: Lin, Q.; Zhang, C.; Zhang, K.; et al. Mandibular Periosteal Cells Exhibit *Trpv2*-Dependent Mechanosensitivity to Microscale Stiffness Patterns. *Regenerative Medicine and Dentistry* 2026, 3(2), 9. <https://doi.org/10.53941/rmd.2026.100009>

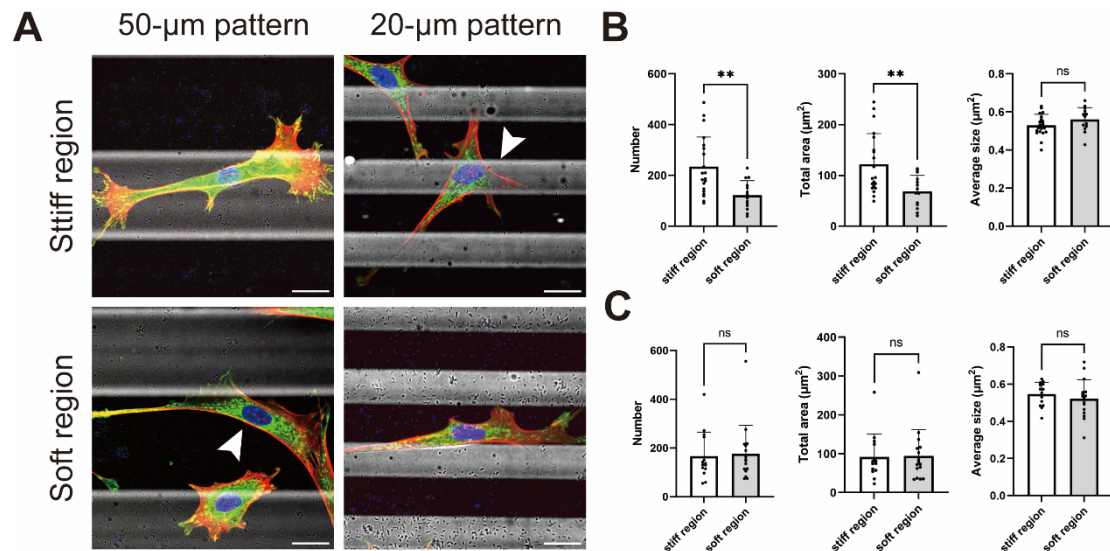


Figure S1. Focal adhesions of m-pSSPCs on 50-μm and 20-μm stiffness patterns. (A) Representative micrograph of immunofluorescent staining of Vinculin (green) of m-pSSPCs on stiff (bright channel) and soft (dark channel) regions of 50-μm and 20-μm stiffness patterns. Scale bar, 20 μm. (B, C) Quantification of focal adhesion for m-pSSPCs on 50-μm pattern (B) and 20-μm pattern (C), including number of focal adhesions per cell, total focal adhesion area per cell, and mean focal adhesion area per cell. **p < 0.01; ns, not significant.

Table S1. Primers used in this study

Primer	Sequence (5'-3')	
<i>Gapdh</i>	Forward	TGTGTCCGTCGTGGATCTGA
	Reverse	TTGCTGTTGAAGTCGCAGGAG
<i>Trpv2</i>	Forward	TGCTGAGGTGAACAAAGGAAAAG
	Reverse	TCAAACCGATTTGGGTCCTGT
<i>Trpv4</i>	Forward	ATGGCAGATCCTGGTGATGG
	Reverse	GGAACTTCATACGCAGGTTTGG
<i>Piezol</i>	Forward	TCATCATCCTTAACCACATGGTG
	Reverse	TGAAGACGATAGCTGTCATCCA

Table S2. DEGs upregulated in m-pSSPCs compared with l-pSSPCs

Please see the attached CSV file.