

Supplementary Materials

Effects of Operating Parameters on Direct Contact Membrane Distillation Concentration of Licorice Root, Honeysuckle, and Indigo Woad Root Aqueous Extracts

Yachun Ma ¹, Longfeng Wu ¹, Jie Fang ¹, Lin Zhang ¹, Chuanrun Li ^{1,2,*} and Huchuan Wang ^{1,*}

¹ Pharmaceutical Engineering Technology Research Center, School of Pharmacy, Anhui University of Chinese Medicine, Hefei 230012, China

² Anhui Province Key Laboratory of Pharmaceutical Preparation Technology and Application, Hefei 230012, China

* Correspondence: crli@ahcm.edu.cn (C.L.); Whc03231986@163.com (H.W.); Tel.: 135-0560-3930 (C.L.); 183-5653-2101 (H.W.)

How To Cite: Ma, Y.; Wu, L.; Fang, J.; et al. Effects of Operating Parameters on Direct Contact Membrane Distillation Concentration of Licorice Root, Honeysuckle, and Indigo Woad Root Aqueous Extracts. *Membrane Horizons* **2026**, *1*(1), 2.

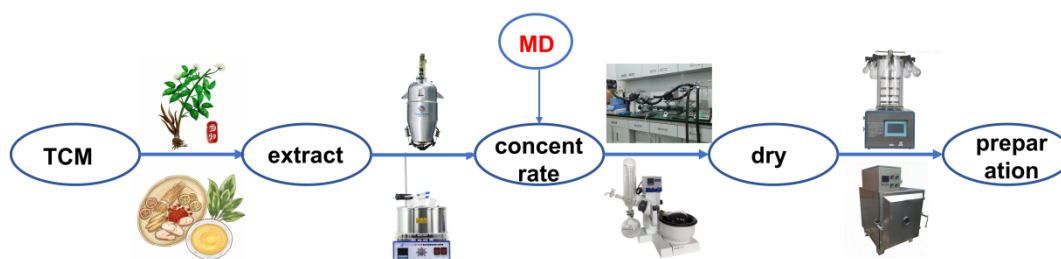


Figure S1. Flow chart of Chinese medicine preparation.

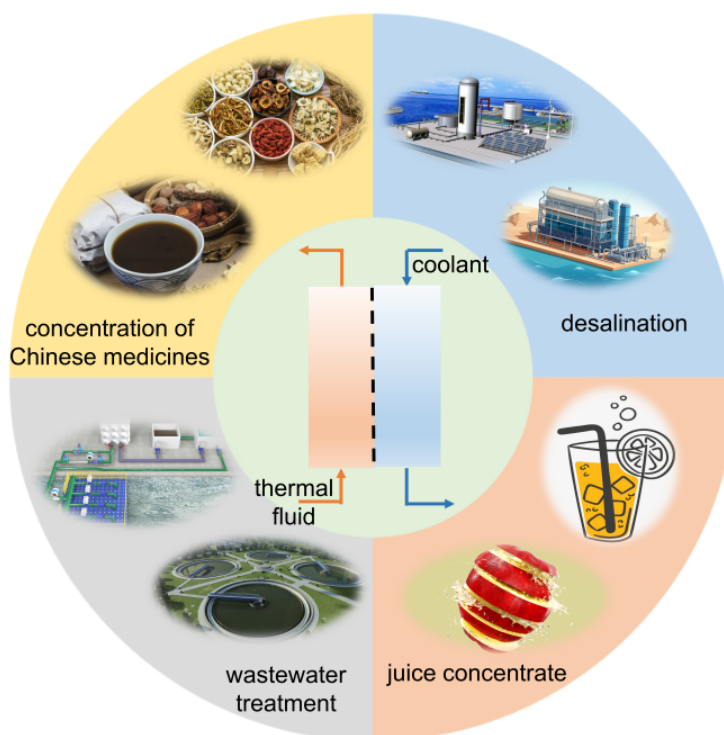


Figure S2. Application of membrane distillation.



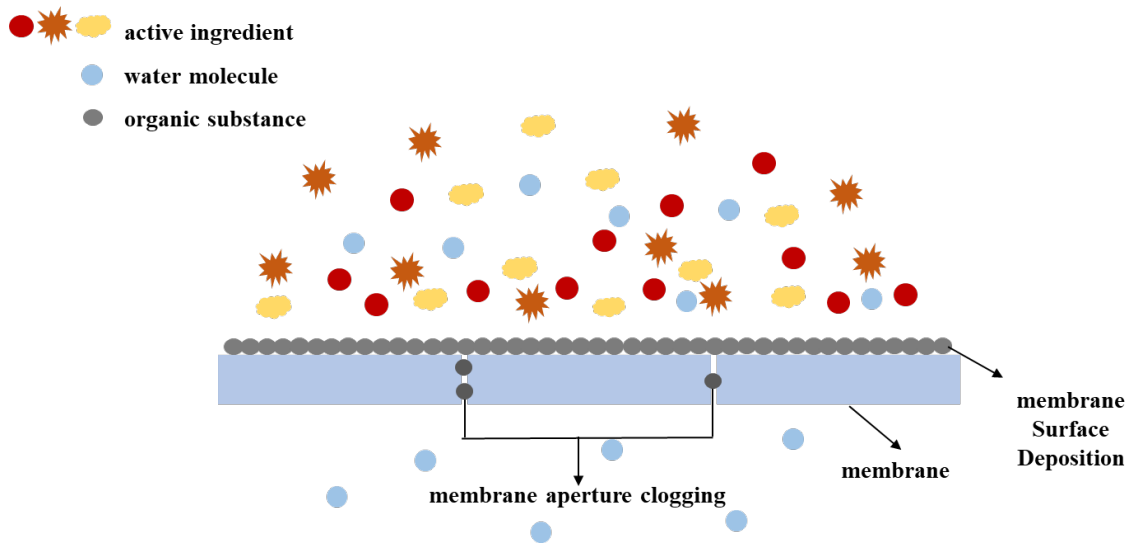


Figure S3. Membrane contamination mechanism diagram.

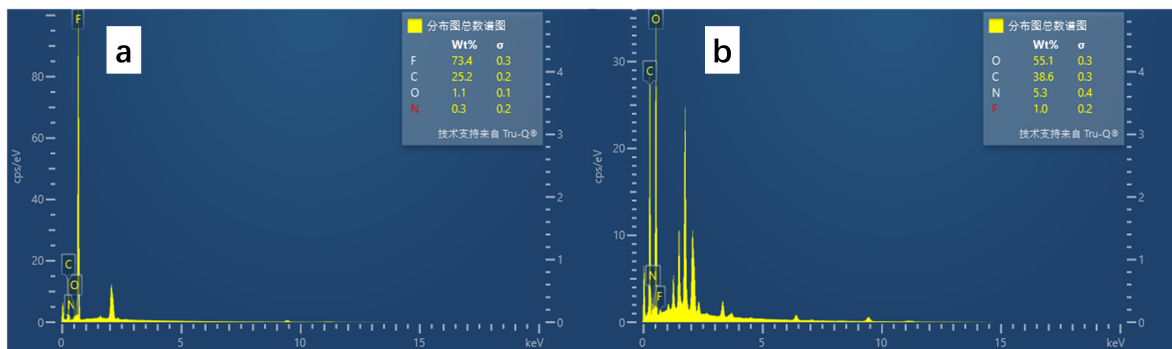


Figure S4. Surface elemental analysis of raw (a) and contaminated (b) membranes.

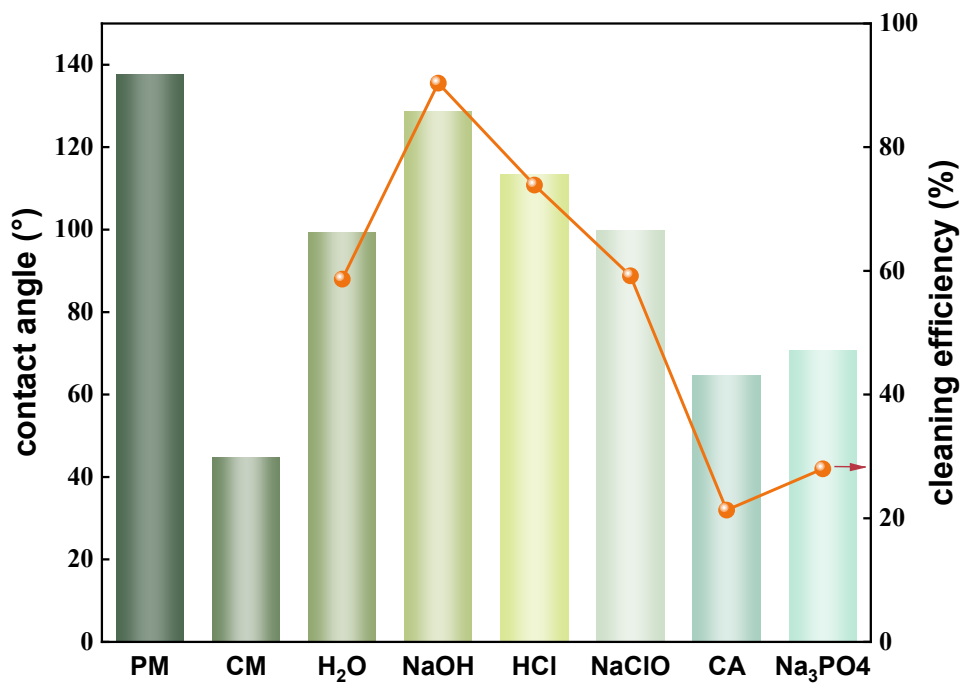


Figure S5. Contact angle of PTFE film with different cleaning agents.

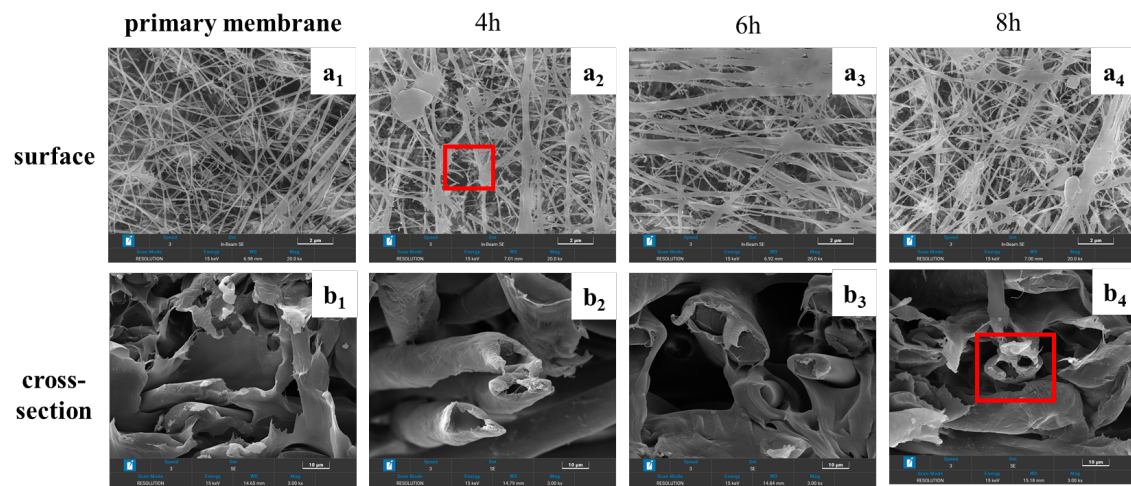


Figure S6. SEM images of the surface and cross-section of the original membrane and the membrane after different cleaning cycles.